

# Security Assertion mark-up language Authentication ADFS with BSF for Proof of Concept

Megha Rani Raigond, Amaresh G T

Department of Computer Studies and Computer Application, Visvesvaraya Technological University, Center for PG Studies, Kalburagi, Karnataka, India

## ABSTRACT

BSF achievement information framework is additionally outlined in single word as "numerous in one". This application are intended to supply the offices of machine-controlled business trade, on-line check, person to person communication, clear record exchange and exchange with some unique functionalities like picture exchange, relationship of data with outperform sheet, direct Arcanum recuperation, gets, mail and sms benefit, news refreshes, climate report and discovering area of the obligation space in Google outline, time and date on date-book. As assets move to the cloud, client's ability a multiplication of certifications - the usernames, passwords and, once in a while, gadgets they use to sign in (or confirm) to cloud-based administrations. Single sign-on advancements come back to the save, allowing clients to validate at one area and get to a spread of administrations while not re-verifying.

**Keywords :** ADFS, BSF, SAML, HTTP, IDS, OOAD

## I. INTRODUCTION

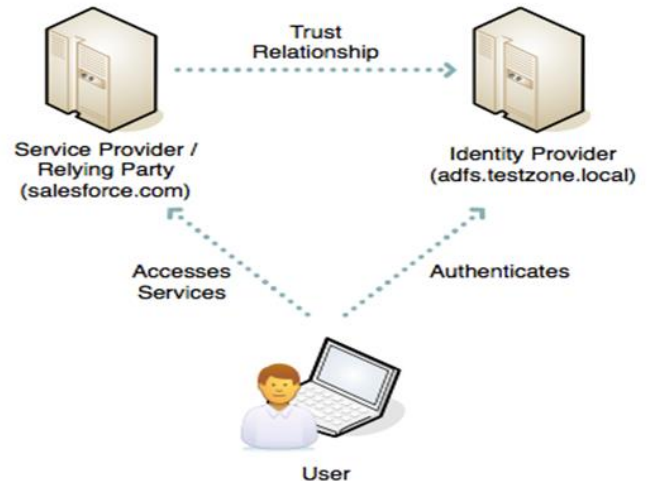
The information has been made shockingly rapidly professionally. Up to 3 NF institutionalization has been done to beat the information reiteration and abnormality. The profile photographs are made do with a fundamental system.

SAML Authentication with ADFS Configuration:

As resources move to the cloud, buyers' dominance an increase of capabilities - the usernames, passwords and, some of the time, contraptions they use to check in (or affirm) to cloud-based organizations. Single sign-on advancements gone to the shield, allowing buyers cutting-edge observer to at one space and obtain to partner variety of organizations though not re-approving.

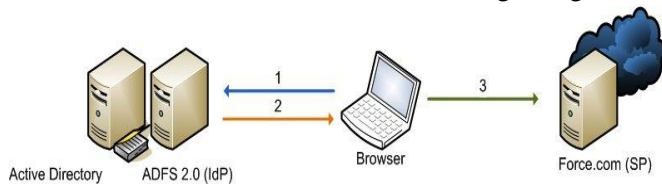
Advancement FS two.0 licenses character association, expanding the idea of upper than brought along confirmation, endorsement, and single sign-on to web applications and organizations settled with respect to where as previously presented, personality alliance

relies on upon models based conventions to learn league trusts between cases providers and depending parties, encouraging secure access to net applications and administrations crosswise over security limits.



The customer confirms (sign in) to the character provider (or IdP) - for our circumstance, this will be AD FS 2.0. The customer is then prepared to get to an advantage no less than one authority associations (shortened as SP, and moreover known as depending get-togethers) without hoping to sign in at every expert center.

We should at first research an audit of the strategy, at that point we'll dive into the setup. The layout underneath shows the technique for an IdP-began login into Force.com – later we'll look at SP-began login.



The user authenticates to the AD FS server using Unified Windows Validation (Kerberos tokens over HTTP) and desires login

AD FS returns a SAML assertion to the user's browser the browser automatically submits the assertion , which logs the user in.

### Problem Statement

The application programming interfaces are bothered with security issues, as late occasions have appeared. The matter is at times not the thought behind the API however rather however it's coded. A few application designers are neglecting to scribble down or utilize arthropod sort because of security, putt each the machine and along these lines the hidden learning in threat. Ineffectively composed code will rapidly end up plainly perilous code once it includes Associate in Nursing API.

### Objective of the Study

- Authentication needs to convey by their possess area.
- A single application has gotten to by respectful segments.
- Requirement business scheme has mapped from focal head.
- All end or segment strategy has controlled by focal head and part clients.

### Scope of the Study

- It offer by Single enlist.
- Automatic framework arrangement.
- Reporting has been planned by client itself.

## II. METHODS AND MATERIAL

### Programming interface Services:

In programming, Associate in Nursing application programming interface (API) could be a game plan of limit definitions, traditions, and mechanical assemblies for building application code. all around terms, it is a course of action of unmistakably outlined out techniques for correspondence between moved code parts.

### Sector Business rationale benefit:

Cooperate between the customer and repair

### API header security:

The Engineers issued Associate in Nursing AWS get to key ID and AWS mystery get to key after they enlist. For ask for validation, the AWS Access KeyId part recognizes the get to key ID that was acclimated figure the mark and, in a roundabout way, the designer making the demand.

### Existing System

These days by getting to various sites, people favor differed assortments of helpful administrations from the net as NPopularized by the expedient unfurl of the net. This improvement should be seen as a unique technique of network access firms inferable from the ascent of the net. It also the after effects of customer requests for specific and prime quality administration. Inferable from the many-sided quality of the administration, be that as it may, clients to remember very surprising IDS and passwords at whatever point they get to the framework. In like manner, the manager ought to oversee numerous IDS and passwords.

### Proposed System

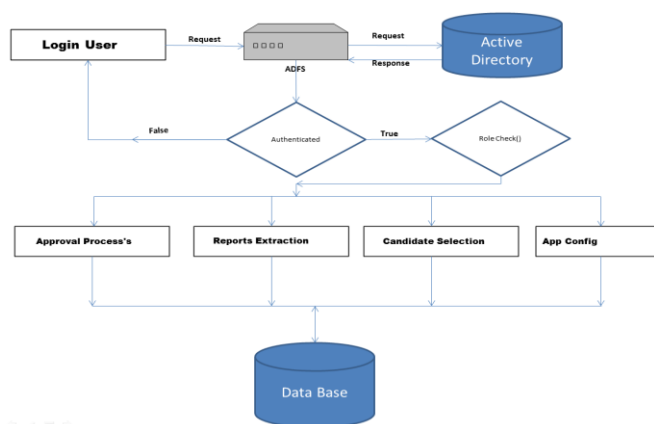
The determination to the present drawback is that the single sign-on (SSO). SSO could be a framework that enables clients to utilize the administrations from numerous sites in changed network access situations while not ID and arcanum if clients before witness to in one site. In this way, SSO could be an appallingly capable determination that gives value diminishment and accommodation to site executives and clients. the

chief essential part of the SSO administration is inside the client validation show, that has goodish outcome on the whole power and security of the SSO. Along these lines, amid this article, Associate in Nursing SSO verification display with misrepresented power and security was anticipated by joining multi-operators bolstered the merchant model of validation models of the SSO.

### System Design (high level or architectural design):

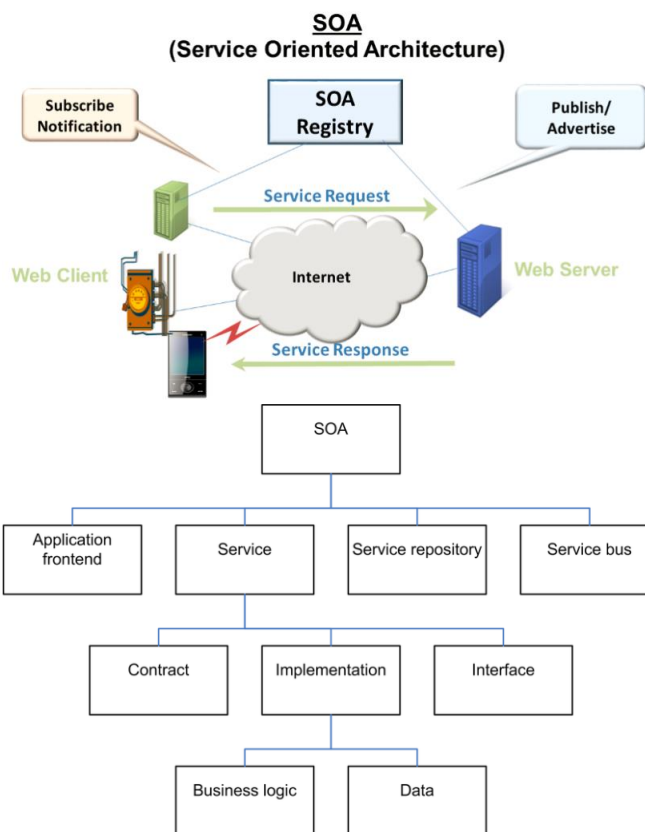
The framework configuration is an idea that gives plan of the framework. The framework configuration ought to be done in a way where configuration ought to satisfy the necessities the client. The framework configuration ought to additionally incorporate the viewpoints, adaptability, security and unpredictability of the framework. The fundamental concentration of the framework configuration is to execute the framework in detail. Accordingly framework configuration is a procedure of characterizing and creating framework to fulfill the client necessity.

The framework configuration has three periods of improvement compositional, intelligent and physical plan.



### Architectural Design

The architectural designs mainly concentrate on the design of the system which defines a structure, behavior and view of the system



SOA will encourage organizations react a considerable measure of rapidly and a great deal of cost-adequately to dynamical economic situations. This kind of configuration advances reuse at the full scale (benefit) level rather than little (classes) level. It additionally can change interconnection to—and use of—existing IT (heritage) resources.

With SOA, the idea is that an organization will look at a retardant comprehensively. A business has a considerable measure of general administration. in principle there wouldn't be a mass of engineers exploitation regardless of hardware sets may satisfy them. however rather they may be cryptography to a consistent that is set inside the business. they'll furthermore create venture wide SOA that epitomizes a business-arranged framework. SOA has furthermore been outlined as a transportation giving intensity to vehicle drivers. the reason for existing being that if everyone had a car, however there was no street wherever, things would be limited and mixed, in any arrangement to get wherever rapidly or quickly.

In a few regards, SOA may be believed to be relate degree expressive arts advancement rather than as an unrest. It catches a few of the most straightforward

practices of past programming framework models. In correspondences frameworks, for instance, almost no improvement of arrangements that utilization truly static ties to address distinctive instrumentation inside the system has occurred. By hold a SOA approach, such frameworks will position themselves to worry the significance of all around characterized, to a great degree between operable interfaces. distinctive forerunners of SOA grasp Component-based programming framework designing and Object-Oriented Analysis and style (OOAD) of remote items, for instance, in CORBA.

- Separation elevates the origination to the business that administrations will be conveyed rapidly and severally from the bigger and slower-moving comes basic inside the association. The business begins understanding frameworks and streamlined UIs work on administrations. This backers elegance. that is to specify, it cultivates business advancements and rushes time-to-market.
- Separation advances the decoupling of administrations from overpowering comes. This urges keen style to that degree in light of the fact that the administration is implied while not knowing WHO its customers square measure.
- Documentation and investigate ancient rarities of the administration aren't installed inside the detail of the bigger venture. this is regularly essential once the administration must be reused later.

SOA assurances to change testing in a roundabout way. Benefits square measure self-ruling, stateless, with completely archived interfaces, and wind up noticeably autonomous from the cross-cutting contemplations of the execution. On the off chance that an enterprise has fitly sketched out investigate learning, then a comparing stub engineered |is made is constructed that responds to the investigate information once an administration is being fabricated. A full arrangement of relapse tests, scripts, information, and reactions is furthermore caught for the administration. The administration will be tried as a 'discovery' exploitation existing stubs similar to the administrations it calls. investigate conditions will be made wherever the primitive and out-of-degree administrations square measure stubs, while whatever is left of the work is investigate arrangements of full administrations. As each interface is totally reported with its own full arrangement of relapse investigate documentation, it

turns out to be anything but difficult to spot issues in investigate administrations. Testing advances to just approve that the investigate benefit works in accordance with its documentation, and discovers holes in documentation and investigate instances of all administrations inside the air. Dealing with the data condition of unaltered administrations is that the exclusively multifaceted nature.

### **Sensible Style**

The sensible style of the framework speaks to the data stream, sources of info and yields of the framework. Legitimate style of the framework is diagrammatically envisioned and offers intelligent connection between the components of the framework. multidimensional dialect incorporates ER chart delineation i.e. Substance Relationship outline.

### **Physical Style**

Physical style speaks to physical conduct of the framework. Physical style is elucidated to the info and yield technique for the framework. Physical style can offers the best approach to enter the data into framework, however will it's reported, however will it's handled and the way it's shown. the need of the physical style is,

- Input needs square measure required {to style|to style} physical outline.
- Output needs square measure required {to style|to style} physical outline.
- Storage needs square measure required {to style|to style} physical outline.
- Process needs square measure required {to style|to style} physical outline.
- System administration and copy or recuperation is required {to style|to style} physical outline.

The physical style is arranged into 3 sub assignment.

- User interface
- Data style
- Process style

UI style square measure intended to clarify however client can give contribution to the framework and the

way framework strategy the information and returned back to the clients.

Information style cares worries is bothered in speaking to about however learning imagined inside the framework do and the way those information square measure hang on into the framework.

### Module Description

The real modules of the comes square measure

### Lookup and System wide design

Design affect the entire framework paying little respect to the present client is. they're laid out by administrator and spared inside the focal storehouse. Client can got the chance to be relate degree chairman to be prepared to adjust them. you generally got the chance to restart program to make these progressions powerful

- Create an operation and framework wide arrangement.
- Establish parts for the arrangement and relegate client records to those parts.
- Create verification decides that by determination give or deny access to oversee basically based variable

### Mange Clients

- Module for each inner and outside client for making the clients and dynamic and inert client.
- Permission for pages with importance clients

### Admin Dashboard

Dashboard for administrator to imagine the machine standing and Candidates technique data

## III. RESULTS AND DISCUSSION

### Context Diagram:

The setting graph is similar to the chart. inside the framework building and programming framework designing, it characterizes a limit between the framework and its air. It characterizes every one of the substances that demonstration with the framework. Abnormal state perused of the framework is given by this chart.

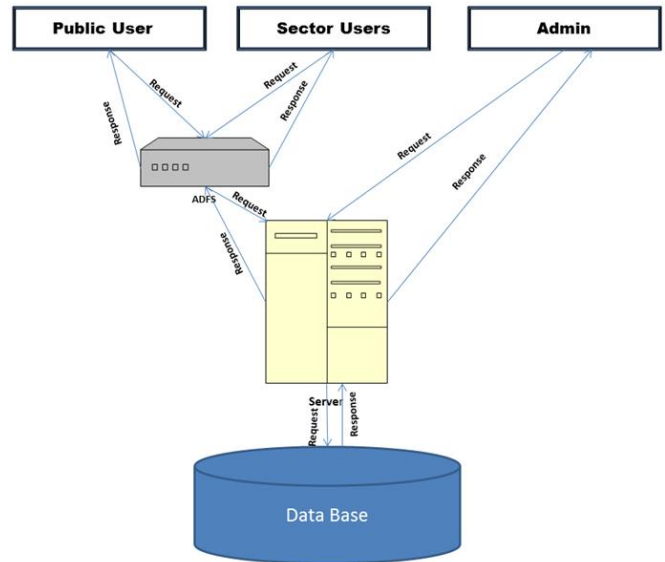


Figure 1. Context Diagram of the System

### Collaboration Diagram:

Collaboration Diagram is an interaction diagram and also called as communication diagram. It is a visual representation of the interaction between the software objects.

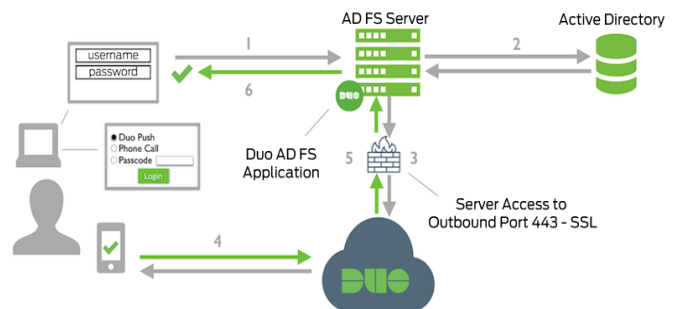
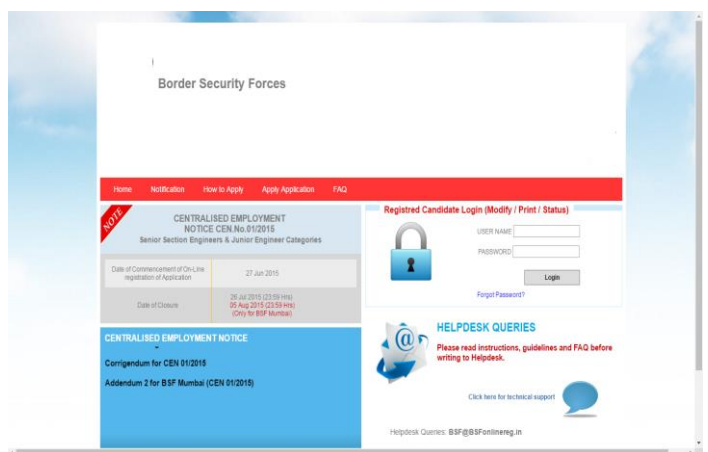


Figure 2. Collaboration Diagram

### Sign on:





## Application Form

## Admin Login

## Session Expiry

## Lookup:

Lookup Code	Lookup Description	Comments	Is Active
M003	1. B.Sc. IN CIVIL ENGINEERING FOR 1 YEAR 2. B.TECH IN CIVIL ENGINEERING FOR 2 YEARS 3. B.TECH IN CIVIL ENGINEERING FOR 2 YEARS 4. B.TECH IN CIVIL ENGINEERING FOR 2 YEARS	Eligible for Civil Engineering for Trade grade location	Yes
M002	1. B.TECH IN CIVIL ENGINEERING FOR 2 YEARS 2. B.TECH IN CIVIL ENGINEERING FOR 2 YEARS 3. B.TECH IN CIVIL ENGINEERING FOR 2 YEARS	Eligible for Civil Engineering for Trade grade location	Yes

## IV. CONCLUSION

We have given a SSO validation for all the area clients. Intervals of security application will be exceedingly secure and every one of the modules can be determined by the focal head.

We have shape validation for open client with the goal that hopefuls can be straightforwardly connected application to any segment and all the procedure has been bored down from focal head. No perplexity in application work points of interest process and end or segments.

Adopted the online installment with the goal that hopefuls can make installment effortlessly and will get the adaptation in the meantime. All the occupation related process can be followed through the framework itself.

## V. Future Enhancement

Keyed-Hashing for Message Authentication and ANSI X9.71, Keyed Hash Message Authentication Code of secure tradition organizations.

## VI. REFERENCES

- [1]. S. Kamara and K. Lauter, "Cryptographic cloud storage," in Proc.14th Financial Cryptography Data Security, 2010, pp. 136–149.
- [2]. K. Ren, C. Wang, and Q. Wang, "Security challenges for the servers," IEEE Internet Comput., vol. 16, no. 1, pp. 69–73, Jan.-Feb.2012.
- [3]. A. Sahai and B. Waters, "Fuzzy identity-based encryption," in Proc.24th Annu. Int. Conf. Theory Appl. Cryptographic Techn 5R. Ostrovsky, A. Sahai, and ., 2005, pp. 457–473.
- [4]. B. Waters, "Attribute-based encryption with non-monotonic access structures," in Proc. 14th ACMConf. Comput. Commun. Security, 2014, pp. 195–203.
- [5]. A. Lewko, T. Okamoto, A. Sahai, K. Takashima, and B. Waters, "Fully secure functional encryption: Attribute-based encryption and (hierarchical) inner product encryption," in Proc. 29th Annu. Int. Conf. Theory Appl. Cryptographic Techn., 2010, pp. 62–91.
- [6]. V. Goyal, O. Pandey, A. Sahai, and B. Waters, "Attribute-based encryption for fine-grained access control of encrypted data," in Proc.13th ACM Conf. Comput. Commun. Security, 2006, pp. 89–98.