

# E-GAS SEVA

C Vasu<sup>1</sup>, H.Syed Ali Fathima<sup>2</sup>

<sup>1</sup>STUDENT, DEPARTMENT OFMCA,MOTHER THERESA INSTITUTE OF COMPUTER APPLICATIONS,PALAMANER, INDIA

<sup>2</sup>ASSISTANT PROFESSOR, HEAD OF DEPARTMENT, DEPARTMENT OFMCA,MOTHER THERESA INSTITUTE OF COMPUTER APPLICATIONS,PALAMANER, INDIA

## ABSTRACT:

This provides an in-depth services for gas agency of indian company extremely benefiting their customers in huge ares of company's services providing to them,making the trail for LPG Gas association and different services a sleek one. In our System ,We provides an interface for the users to raised services.Customers will read all the services provided in the least the locations.It is easy to place a call for participation like gas booking or for brand new association through our system.It is extremely benfitting to produce services to customers.The client easy to communicate to the dealers for asking connections,accessories,transferring services from one location to a different location.

**Keywords:** LPG(Liquefied Petroleum Gas), Customers, Dealers.

## I. INTRODUCTION

Tank cars in a Canadian train for carrying liquefied petroleum gas by rail. Liquefied petroleum gas or liquid petroleum gas (LPG or LP gas), also referred to as simply propane or butane,are flammable mixtures of hydrocarbon gases used as fuel in heating appliances, cooking equipment, and vehicles. It is increasingly used as an aerosol propellant and a refrigerant, replacing chlorofluorocarbons in an effort to reduce damage to the ozone layer. When specifically used as a vehicle fuel it is often referred to as autogas.Varieties of LPG bought and sold include mixes that are mostly propane mostly butane and, most commonly, mixes including both propane and butane. In the northern hemisphere winter, the mixes contain more propane, while in summer, they contain more butane.In the United States, mainly two grades

of LPG are sold: commercial propane and HD-5. These specifications are published by the Gas Processors Association (GPA) and the American Society of Testing and Materials (ASTM). Propane/butane blends are also listed in these specifications.

In existing framework ,the whole procedure experiences manually.that is client needs to go to the workplace to put any request.It takes so much time.It isn't happy for all customers.customers can not know about the administrations gave at the location.It is exceptionally hard to deal with the clients. In our System ,We gives an interface to the clients to better services.Customers can see every one of the administrations gave at all the locations.It is anything but difficult to put a demand like gas booking or for new association through our system.It is very benfitting to give administrations to customers.The client simple to convey to the merchants for asking connections, accessories,

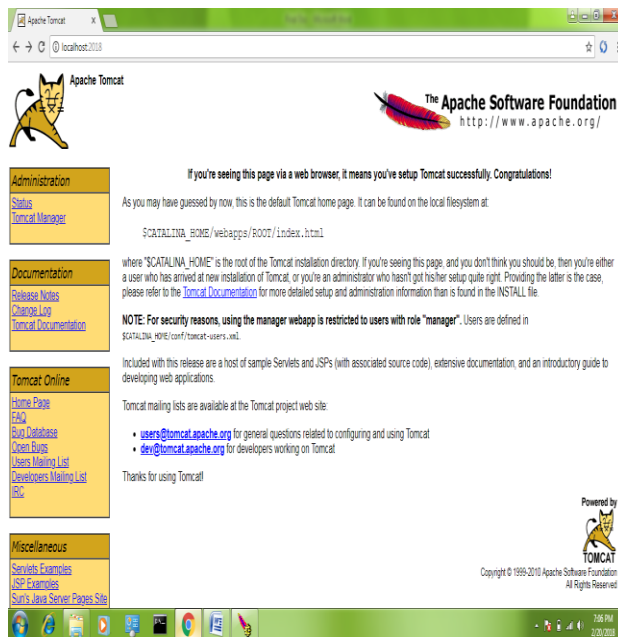
transferring administrations starting with one area then onto the next area. This gives an inside and out administrations to gas office of Indian organization very profiting their clients in huge areas of organization's administrations giving to them, making the way to LPG Gas Connection and Other administrations a smooth one.

## II. MODULES

### Admin:

Admin has to login first by using his/her credentials. Admin can manage the locations, dealers, no. of connections for the dealers. Admin can be able to perform following operations: he accepts dealers applications, adds the new locations, allocates the connections for dealers and online application form for dealer ship etc.

### RESULTS:

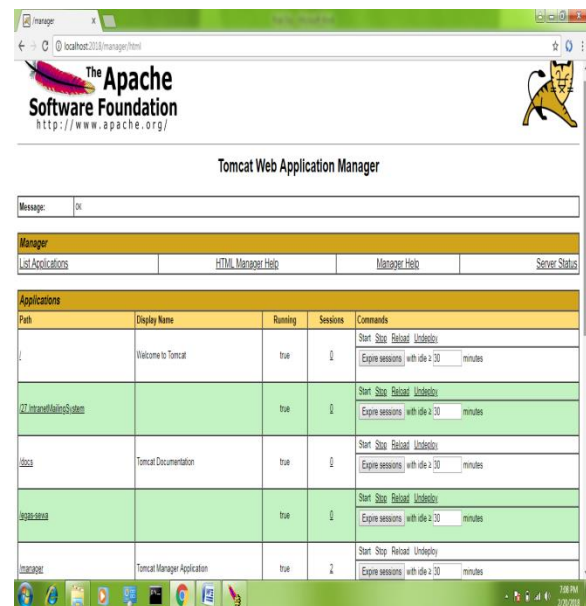


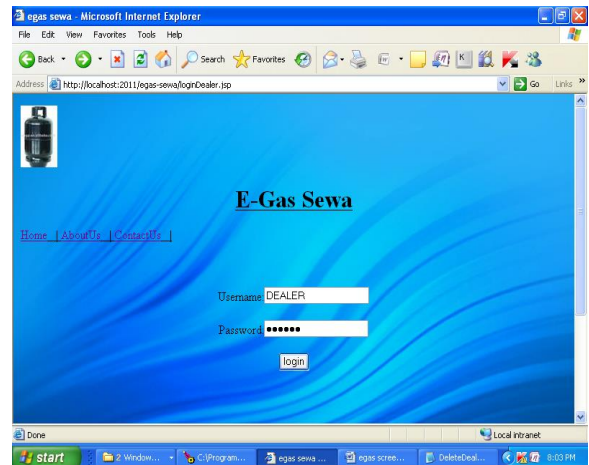
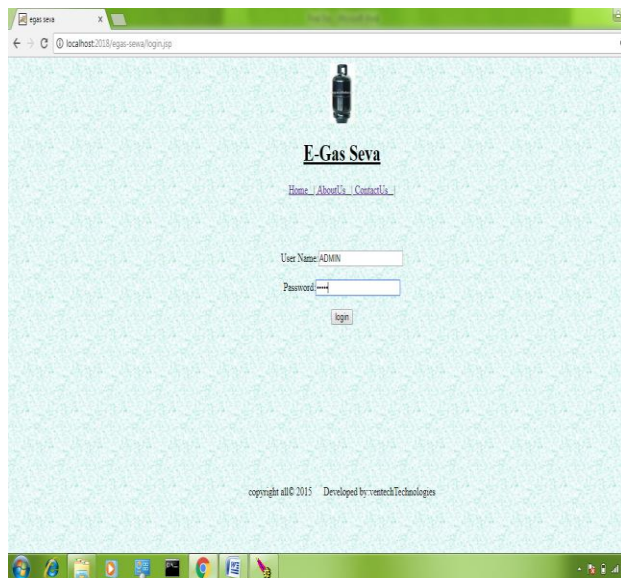
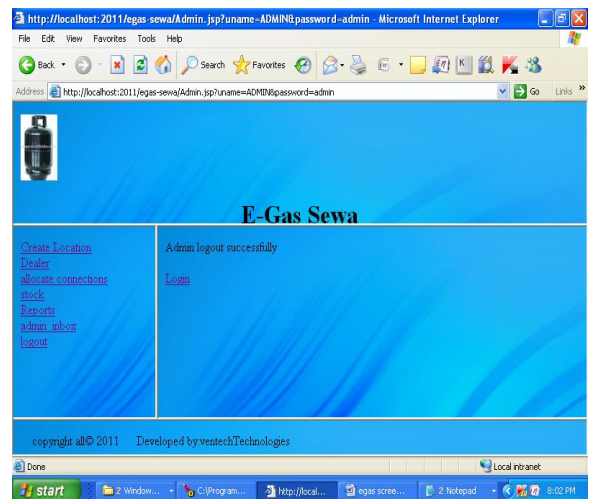
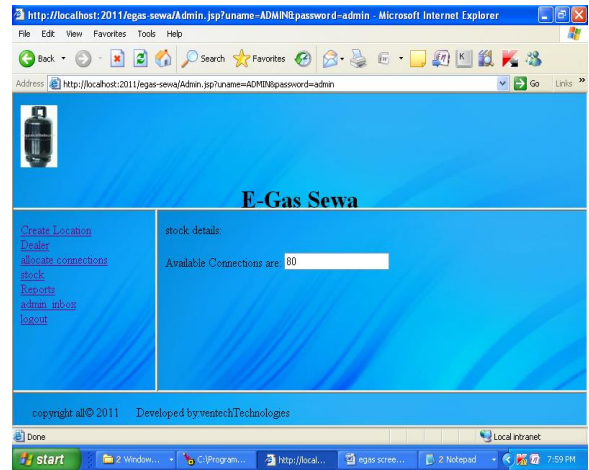
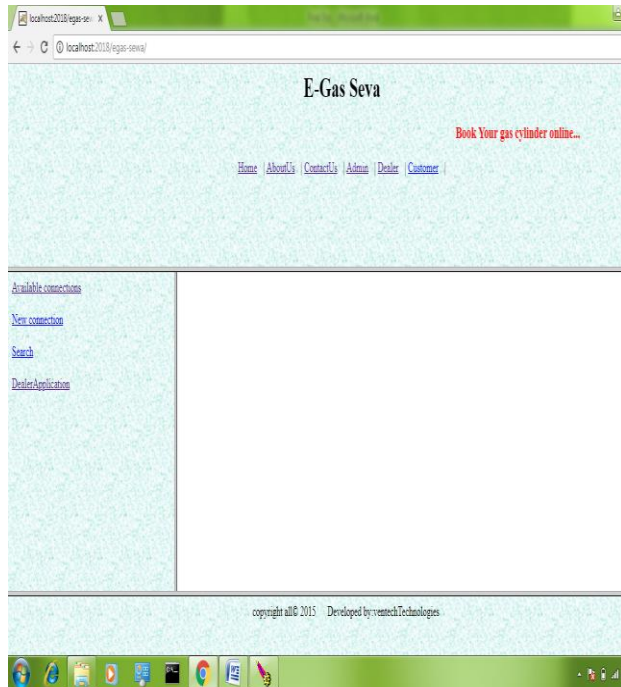
### Dealer:

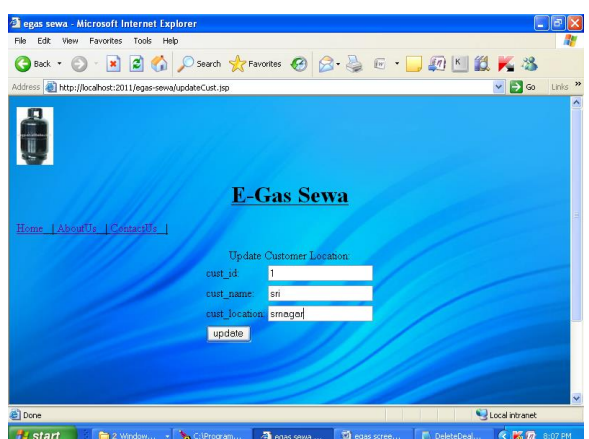
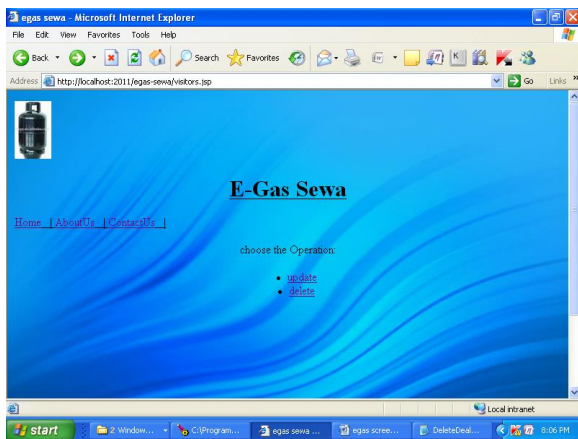
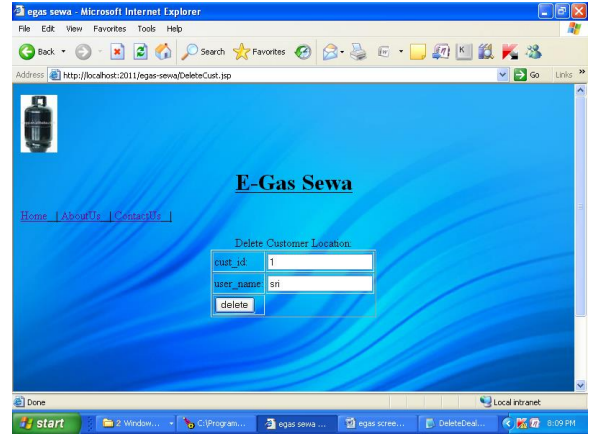
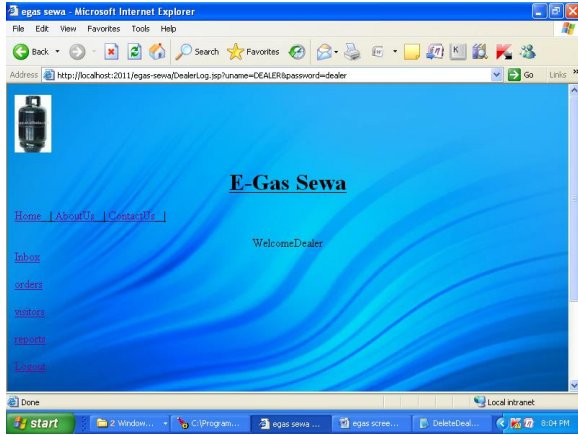
Dealer has to login first by using his/her credentials. He manages the customers for a particular location. Dealers can be able to perform following operations: He accepts the customers applications, accessories, receive the requests from the customers, online booking facility for LPG Gas, providing accessories, transfer LPG connection to another location.

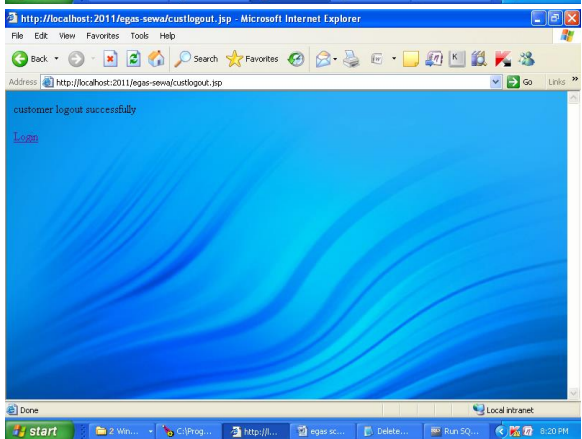
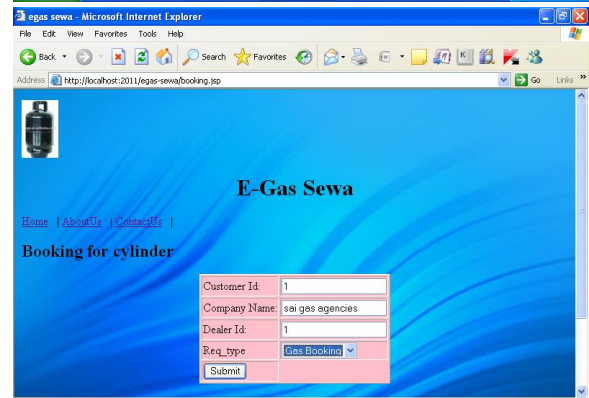
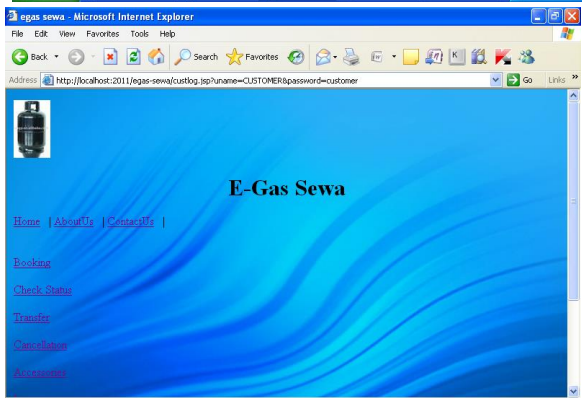
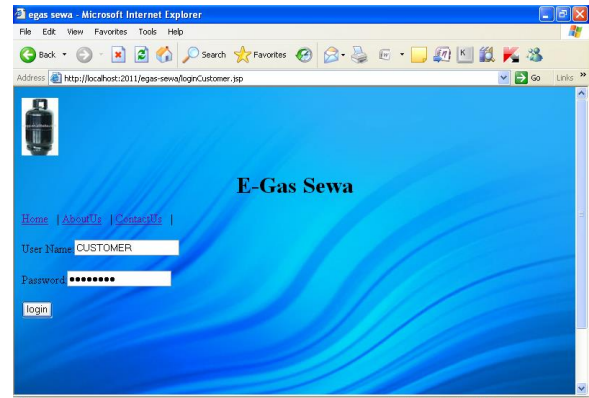
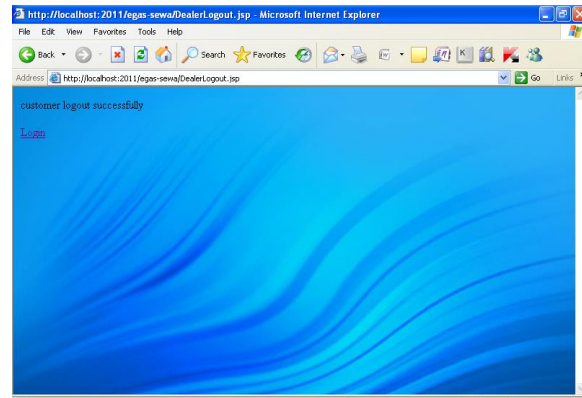
### Customers:

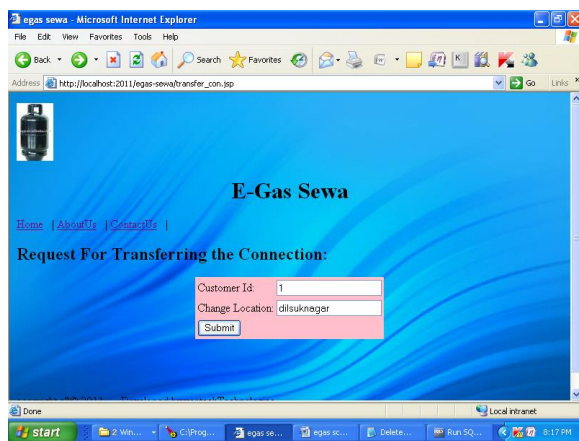
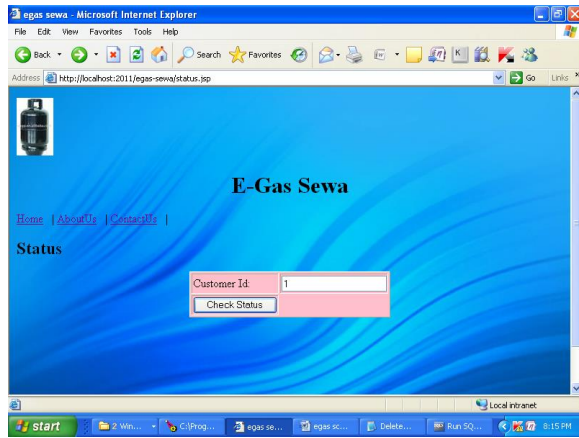
Customer has to register first and then login by using his/her credentials. Customers are the users, who are gaining services from our system. They put requests like gas booking, cancellation or change service connection location etc to the dealers.











### III. CONCLUSION

In our System ,We provides an interface for the users to raised services.Customers will read all the services provided at all the locations.It

is simple to place asking like gas booking or for brand new affiliation through our system.It is extremely benfitting to produce services to customers.The client simple to speak to the dealers for asking connections,accessories,transferring services from one location to a different location. This provides an in-depth services for gas agency of indian company extremely In this project we are providing a online billing system in which the customer can pay the bill to the Government via mobile or online. It provides simplicity for the application and it saves a lot of time for the user and the admin.

### IV. REFERENCES

- [1] [www.javatpoint.com](http://www.javatpoint.com)
- [2] <http://stackoverflow.com/>
- [3] <http://www.dzone.com/links/index.html>
- [4] <http://leetcode.com/>
- [5] <http://docs.oracle.com/javase/>
- [6] <https://www.coursera.org/>
- [7] [www.w3schools.com](http://www.w3schools.com)
- [8] <http://www.javaworld.com/>
- [9] <http://www.mkkyong.com/>