

Fabrication and Study of the Effect of Flyash on Aluminium 2024 Composite

Madhusudan K

Assistant Professor, Department of Mechanical Engineering, New Horizon college of Engineering, Bangalore.

ABSTRACT

Al-alloys are widely used application due to their low density, good mechanical properties, better corrosion resistance, wear resistance as compared to conventional metals and alloys. Fly ash is chosen because of it is least expensive and low density reinforcement available in large quantities as solid waste by-product during manufacturing of bricks. Due to low weight it can be utilized in automobile application and thus improving its life. The present work has been done on Al alloy 2024 Fly ash composite. These were fabricated using Al-2024 alloy as metal matrix and fly ash as reinforcing material. Various weight based composites like (Al 100% - FA 0%), (Al 95% - FA 5%), (Al 90% - FA 10%), (Al 85% - FA 15%) were fabricated by Stir casting technique. The obtained composites were sized into small specimens and tests like hardness test, wear test, tensile test, microstructure test were carried out.

Keywords : Composite, Fly ash, Al - 2024, Wear, Hardness, Tensile, Microstructure.

I. INTRODUCTION

ALUMINIUM 2024:

Aluminium alloy 2024 has a thickness of 2.78 g/cm^3 (0.1 lb/in^3). Electrical conductivity of 30% IACS. Young's Modulus of 73 GPa (10.6 Msi) over all tempers. 2024 aluminium amalgam's creation generally incorporates 4.3-4.5% copper, 0.5-0.6% manganese, 1.3-1.5% magnesium and not exactly a large portion of a percent of silicon, zinc, nickel, chromium, lead and bismuth. It has an extreme elasticity of 140– 210 MPa (21– 30 ksi), and most extreme yield quality of close to 97 MPa (14,000 psi).

FLYASH :

Fly ash particles are generally spherical in shape and range in size from $0.5 \mu\text{m}$ to $300 \mu\text{m}$. Fly ash is a heterogeneous material. SiO_2 , Al_2O_3 , Fe_2O_3 and occasionally CaO are the main chemical components present in fly ashes. Two classes of fly ash are

defined by ASTM C618: Class F fly ash and Class C fly ash. Fly ash can be dark gray, depending on its chemical and mineral constituents. Tan and light colors are typically associated with high lime content. Fly ash color is very consistent for each power plant and coal source.

Table.1 Composition of Flyash

Sl. No.	Composition	Percentage
1	SiO_2	60.21
2	Al_2O_3	26.08
3	Fe_2O_3	4.80
4	CaO	1.00
5	MgO	0.25
6	Total alkali as Na_2O	0.86
7	SO_3	0.25
8	Cl	0.005
9	LOI(Loss in Ignition)	1.71



Fig.1 Flyash

ROCKWELL HARDNESS TEST:

Rockwell hardness of a Specimen involves application of a minor load followed by major load. The minor load resets to zero position. Major load is applied, then removed while maintaining minor load. Depth of penetration from the zero position is measured on a dial, in which a harder surface gives a much higher hardness number. The advantage of Rockwell hardness is that it displays the hardness values directly. Readings to be taken on a flat surface, as convex surfaces gives error readings.

WEAR ANALYSIS (PIN-ON-DISC):

In a pin-on-disc wear tester, a Specimen is loaded on a flat rotating disc in a way that the circular wear path by the machine is followed. The machine is used to evaluate various wear and friction properties for different materials under pure sliding.

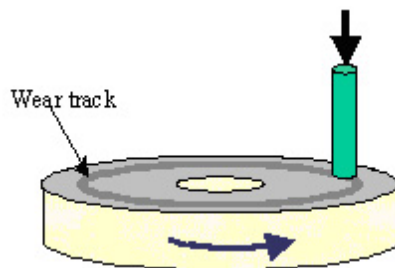


Fig.2 Pin on Disc analysis

TENSILE TEST:

This is a fundamental material test in which a sample is subjected to controlled tension until failure, it has maximum elongation and reduction in area. Properties that are directly measured via tensile test are ultimate tensile strength.

Samples were machined and tested as per ASTM E8 standard. Bench tensometer was the device used to test the tensile strength. The electronic Tensometer is a compact and bench model horizontal Tensile Testing Machine of capacity 20 KN. It is a small version of UTM- Universal Testing Machine and is used for testing tension and also compression, shear and flexural properties of different materials.

Table.2 Specimen composition

Specimen	Aluminium 2024 (wt %)	Flyash (wt %)
Specimen 1	100%	0%
Specimen 2	95%	5%
Specimen 3	90%	10%
Specimen 4	85%	15%

II. EXPERIMENTAL RESULTS AND DISCUSSION

WEAR TEST:

Table 3 Wear test results

COMPOSITION	SPEED (RPM)	LOAD (N)	TIME (min)	WEIGHT (gm)			WEAR RATE (gm/mm)
				INITIAL	FINAL	WT. LOSS	

0%	600	9.81	5	3.2638	3.2614	0.0024	2.4047×10^{-6}
	500	19.613	5	3.2614	3.2535	0.0079	9.4940×10^{-6}
5%	600	9.81	5	2.5267	2.5140	0.0127	1.2718×10^{-5}
	500	19.613	5	2.5140	2.5042	0.0098	1.1777×10^{-5}
10%	500	19.613	5	2.5829	2.5076	0.0753	4.2920×10^{-7}
	500	19.613	5	2.5076	2.5058	0.0018	8.0969×10^{-5}
15%	500	19.613	5	3.0202	3.0032	0.0017	2.060×10^{-6}
	500	19.613	5	3.0032	2.9859	0.0173	1.4571×10^{-5}

TENSILE TEST:

Table 4 Tensile test results

Sl.no	PARAMETERS	SPECIMEN			
		1	2	3	4
1	Initial area, (mm ²)	32.68	32.68	32.68	32.68
2	Initial gauge length, (mm)	25	25	25	25
3	Peak load, (N)	5555.8	5065.4	5845.8	6119.8
4	Engineering Ultimate Tensile strength, (MPa)	174.2	160.7	185.8	190.8
5	True Ultimate Tensile strength, (MPa)	210.9	182.00	222.8	284.1

HARDNESS TEST:

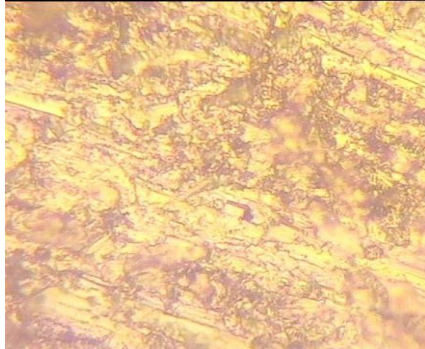
Table 5 Hardness Test Results

COMPOSITION (Flyash)	APPLIED LOAD (Kg)	BRINELL HARDNESS NUMBER
0%	100	90.59
5%	100	113.162
10%	100	143.41
15%	100	153.162

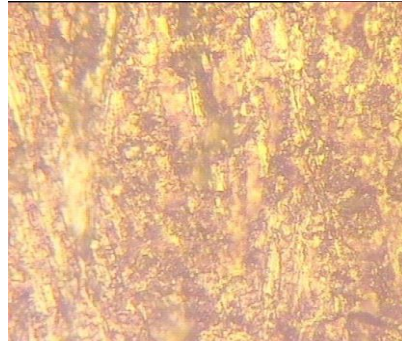
MICROSTRUCTURE EXAMINATION:

The microstructure observations of the casted specimens are as shown below. The microstructures show the distribution of Flyash particles.

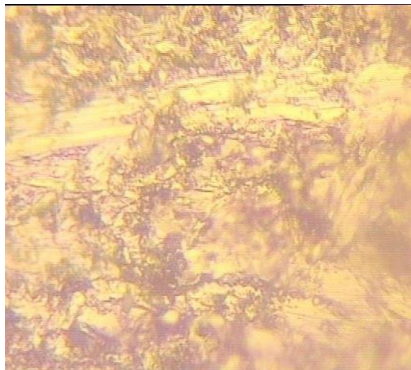
The grain boundaries are visible and no porosity is seen.



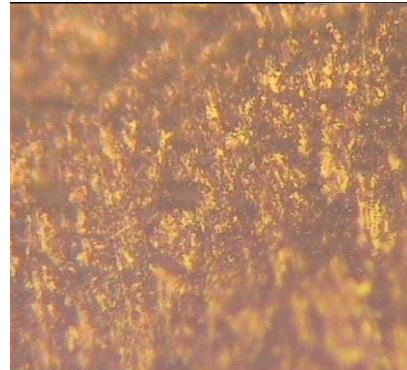
SPECIMEN 1



SPECIMEN 2



SPECIMEN 3



SPECIMEN 4

I. CONCLUSIONS

Al 2024 with flyash composite was synthesized successfully by using stir casting technique. By adding flyash the strength of al 2024 alloy gets improved. This is due to the presence of hardened fly ash particles and oxides.

The reinforced Al2024 exhibits higher tensile strength.

The hardness values increased compared to the pure alloy without reinforcement and specimen 4 was found to have the highest hardness number.

The reinforced composites were found to have less wear loss compared to the base alloy.

Microstructure evaluation showed dispersion of the reinforcements in the specimens.

III. REFERENCES

- [1] Vinod G. Gokhare, Dr. D. N Raut and Dr. D.K. Shinde: 3D Printing Aspects and Various Processes used in the 3D Printing, In International Journal of Engineering Research & Technology (IJERT), Vol-06, June-2017.
- [2] Ankur Bhargava, Anjani Kumar: Arduino Controlled robotic arm, International Conference on Electronics, Communication and Aerospace Technology (ICECA),2017.

- [3] KruthikaK, KiranKumar B.M and Dr.Sanjay Lakshminarayanan: Design and Development of a Roboticarm.
- [4] Edwin Basil Mathew, Dushyant Khanduja, Bhavya Sapra and Bharat Bhushan: Robotic arm control through Human arm movement detection using Potentiometers, International Conference on recent developments in control, automation and power engineering (RDCAPE),2015.
- [5] Pedro Neto, J. Norberto Pires and A. Paulo Moreira: Accelerometer-based control of an Industrial Robotic arm, The 18th IEEE International Symposium on Robot and Human Interactive Communication,September-2009.
- [6] Virendra Patidar, Apoorva Mishra and Ritu Tiwari: Robotic Gripper Arm System with Effective Working Envelope, International Conference on Intelligent Computing and Control Systems (ICICCS),2018.
- [7] Feng Cao, Jihao Liu, Chen Zhou, Yanzheng Zhao, Zhuang Fu and Weixin Yan: A Novel 5-DOF Welding Robot Based on SCARA, IEEE 10th Conference on Industrial Electronics and Applications (ICIEA),2015.
- [8] Ramish Chouhan, Farah Kanwal, Siraj Ali and Nida Ali: Design and Development of a Prototype Robotic Gripper, International Conference on Robotics and Emerging Allied Technologies in Engineering (iCREATE),April-2014.
- [9] A Guochen, Sha Zhanyou: Programmable Voltage Regulator Design based on Digitally Controlled Potentiometer, International Conference on Electronic Measurement and Instruments (ICEMI),2007.
- [10] Kadirimangalam Jahnavi, Sivraj P: Teaching and Learning Robotic Arm Model, International Conference on Intelligent Computing, Instrumentation and Control Technologies (ICICT),2017.
- [11] Jeong-WooLeeandTae-WooKim: Designand Experimental Analysis of Embedded Servo Motor Driver for Robot Finger Joints, International Conference on Ubiquitous Robots and Ambient Intelligence (URAI),November-2011.
- [12] Ramesh Kolluru, Kimon P. Valavanis, Stanford A. Smith, and Nikos Tsourveloudis:Design Fundamentals of a Reconfigurable Robotic Gripper System, IEEE TRANSACTIONS ON SYSTEMS, MAN, AND CYBERNETICS, March2000.
- [13] Antonio J. Lopez-Martin and Alfonso Carlosena: Contactless Potentiometers for Automotive Applications, International Conference on Sensing Technology,2013.
- [14] Mohammed Abu Qassem, Iyad Abuhadrous and Hatem Elaydi: Modeling andSimulation of 5 DOF Educational RobotArm.
- [15] Adin Baskoro Pratomo, RizaSatriaPerdana: Arduviz, A Visual Programming IDE for Arduino, International Conference on Data and Software Engineering (ICoDSE),2017.