

Designing and Implementation of a Fingerprint Lock System

Vikas Choudhary¹, Mukul Thakur², Deepanshu Singh³, Tanuj Choudhary⁴, Harpreet Kaur⁵

¹⁻⁵ Electrical Engineering Department, Chandigarh University, Gharuan, Mohali, Punjab, India

ABSTRACT

The use of fingerprint for identification has been employed in law enforcement for about a century. A fingerprint locker system using microcontroller uses fingerprint recognition system as a process of verifying the fingerprint image to open the electronic lock. This research highlights the development of fingerprint verification system using Arduino 1.6.3. Verification is completed by comparing the data of authorized fingerprint image with incoming fingerprint image. The incoming fingerprint image will first go through the extraction and filtering processes through which the information about it is obtained. Then the information of incoming fingerprint image will undergo the comparison process to compare it with authorized fingerprint image. In this work, the fingerprint module was trained to learn and identify whether the incoming fingerprint image is genuine or forgery. A much broader application of fingerprint is for personal authentication, for instance to access a computer, a network, an ATM-machine, a car or a home.

Keywords : Fingerprint, Microcontroller, Verification, Personal, Image

I. INTRODUCTION

In spite of numerous advantages of biometrics-based personal authentication systems over traditional security systems based on token or knowledge, they are vulnerable to attacks that can decrease their security considerably. Biometrics-based personal authentication system that use physiological (fingerprint, face) or behavioral (speech, handwriting) traits are becoming increasingly popular, compared to traditional systems that are based on tokens (key) or knowledge (password). Fingerprint-based identification is one of the most important biometric technologies which have drawn a substantial amount of attention recently. Fingerprint technology is so common in personal identification that it has been well established. Each human has unique owns fingerprint, even the twin have different fingerprint.

So fingerprint recognition is useful in security law application. The electronic lock using fingerprint recognition involves a process of verifying the user's identity by using fingerprint recognition as a key to the electronic lock. This work highlights the development of fingerprint recognition system using ARDUINO 1.6.3. to recognize the input fingerprint image from the stored samples in bmp, tif; tiff; jpg; jpeg; gif file type. Then the information of the recognized fingerprint image will be store in database for verification authorized user. These fingerprint recognition systems are based on the hypothesis that the human fingerprint is unique. It is important to validate the individuality of fingerprint in order to use the fingerprint image for security related system. In real application, the fingerprint data is recorded by using USB fingerprint scanner and then sent to a recognizer that will check the similarity of the user's fingerprint.[1-2]

II. LITERATURE REVIEW

Uludag et al (2004) explained that biometric technique is an automated methodology to recognise the person based in term of their behaviour or their physical characteristics. These characteristics and behaviour include the features such as hand geometry, handwriting, face, fingerprints, vein, voice, retina, and iris etc.

Jain et al (2005) described the difference that the biometric technique can be measure by using either persons behavioural characteristics and or physiological characteristics or can be use both. The behavioural characteristics create from the actions of an individual person, and it indirectly measures unique characteristics of the human body. Which includes signature-scan, keystroke-scan, voice recognition, etc (but it's not limited). Time can act as a metric for behavioural biometrics, because it measures behaviour by considering the timeline of a given process. The physiological biometrics technique consists of measurements and data congregated from direct measurement of a part of the human body such as geometry, facial recognition, fingerprint, iris-scan etc.

Ashbourn (2004) also describe that currently the most popular techniques are the ones are based on physical characteristics as fingerprint ridge pattern, hand geometry, retinal recognition, facial recognition, and also behavioural characteristics such as voice verification and signature stoke pattern

III. DESIGN AND IMPLEMENTATION

The design and implementation of each of the fundamental circuit units and how the program was implemented to control the design and perform the required functionality is hereby presented.

A. Power supply

This unit comprises of the transformer, diode rectifier, filtering capacitor, switching relay, back-up battery and regulators.

B. Transformer

The local main is expected to deliver 240V, the system voltage requirement is 12V and 5V, therefore a 240V/15V transformer was used. The system input resistance is about 200Ω, therefore the expected load current is

$$I = V/R = 5/200 = 250 \text{ mA}$$

A transformer with the current rating of 500mA which is greater than load current was used. Thus the power rating of the transformer was completed to be

$$S = VI = 12 \times 500 \text{ mA} = 6\text{VA}$$

C. Rectifier

The voltage employed is bridge rectifier arrangement. The circuit diagram is as shown In fig.1 below

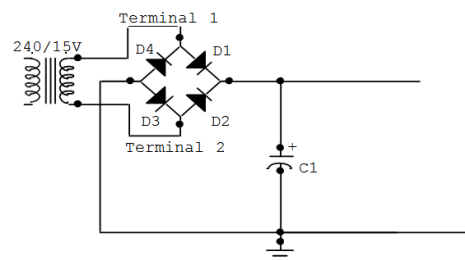


Fig.1: Full-wave Bridge Rectifier

D. The filter

This is made up of capacitor connected across the out put of the rectifier to smoothen the voltage to have the minimum ripple factor (at least 10% of the dc voltage). It is preferable to choose a filtering capacitor that will hold the peak-to-peak ripples at approximately 10% of the peak voltage. Therefore;

$$V_{\text{ripple}} = 0.1 V_{\text{peak}}$$

$$V_{\text{ripple}} = 0.1 \times 16.97$$

$$V_{\text{ripple}} = 1.697\text{V}$$

$$\text{But also } V_{\text{ripple}} = I/2fC \text{ for full wave}$$

$$\text{Where; } I = \text{current taken by the load}$$

$$f = \text{frequency of supply}$$

C = filtering capacitor

$$C = I / 2fV_{ripple}$$

$$= 0.17 / (2 \times 50 \times 1.697)$$

$$C = 1001.7\mu F$$

From this calculation, a standard capacitor of 2200 μ F was chosen.

E. The Regulator.

The regulator is a single chip that regulates the ripple free rectified voltage to give a constant out put voltage. Since the circuit needs a supply voltage of 12V and 5V, a 12V and 5V regulators were used. The percentage regulation or simply regulator of a power supply is given by:

V_{max} = maximum dc output voltage

V_{min} = minimum dc output voltage

In a general form

$$\% \text{ regulation} = [(V_{no \text{ load}} - V_{full \text{ load}}) / V_{full \text{ load}}] \times 100$$

The power supply, sensory, controller and the microcontroller units are connected as shown in Fig. 2 to form the lock system.

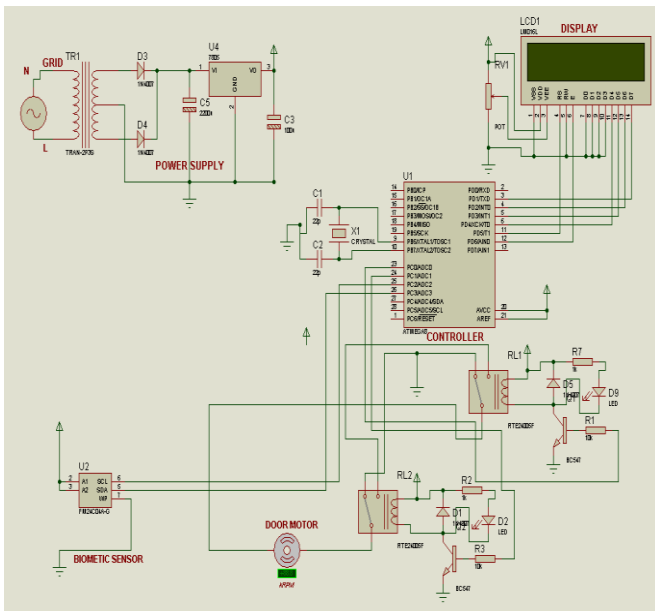


Fig.2 circuit diagram of the system

IV. LOADING THE PROGRAM

The program developed and loaded on the microcontroller by means of an interfacier known as the programmer. The program and Hex code is given in appendix.

A. Assembler

The assembler used for this project is the MPLAB version 5.7 which was downloaded from the microchip website. This is windows based integrated development environment (IDE) software which gives support for the PIC and other microcontrollers. This software contains a full featured editor, three operating modes (editor, emulator, simulator, a project manager, customizable tool bar and key mapping, status bar with project information.

Arduino 1.6.3 allows one to edit source files (either in assembly or 'C'). Other features include debugging using:

- Source files
- Absolute listing file

B. ARDUINO Programmer

This was used to burn the hex files into the microcontroller. This programmer has the facility to program a ATMEGA328, erase the EEPROM, and also verify the already written program for errors.

C. Program flow chart

The program flow chart is given in Fig. 3.

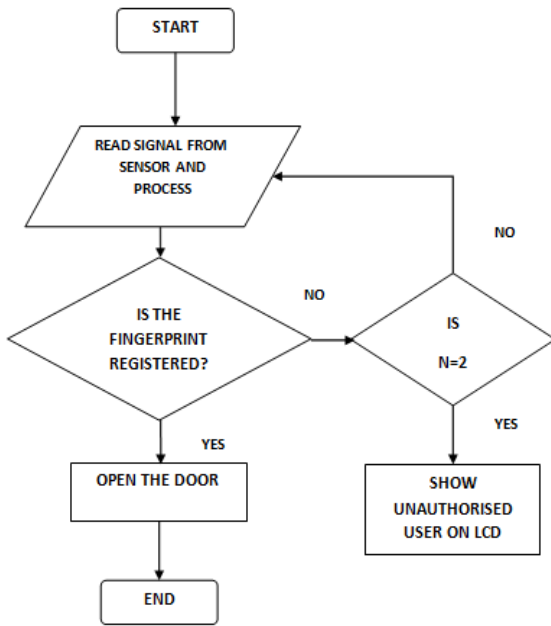


Fig. 3: The program flow chart

V. TESTS, RESULTS AND DISCUSSION

This section deals with the description of tests performed on the various sections of the overall system and their corresponding results as well as the result of the overall system. In order to verify the correct functionality of the system, each component had to be tested individually. To achieve the effective testing of these various components, the following tools were used:

- Digital multimeter
- Bread board
- Logic probe
- Light emitting diodes
- Arduino 1.6.3. software

The testing was done on each and every components/sections that make up the circuit to ensure proper and satisfactory operation of the fingerprint lock. The debugging was done using the Arduino 1.6.3; Each and every section of the code was debugged properly to ensure proper functionality thus a step debugging was done. This is a facility in

the software that enables you step into program and at the same time views the registers and flag settings. The whole system was tested with various trials of fingers and only the registered fingers turned on the output DC motor to unlock the door as required. The relay 2 is used to turn on the DC motor in reverse mode to lock the door as required.

VI. CONCLUSION

The aim of the work is to design a fingerprint lock system that can be used to lock and unlock a door system but its use can be extended to other electronic locking systems such as vaults. Having realized the device and found it working properly according to its design specifications and couple with the facts that relatively cheap components were involved in its realization, the aim of the research can be said to be achieved. The system can be used as an effective security lock.

VII. ACKNOWLEDGEMENT

We would like to express my special thanks to our Project teacher from electrical engineering department “Ms Harpreet kaur Channi” for their support in completing our project and research paper.

VIII. REFERENCES

- [1] Boylestad, R.L and Nashelsky, L. (1996). Electronic Devices and circuits Circuit Theory, Prentice Hall, London.
- [2] Forrest M. M. III (1984). Getting started in Electronics, Printed in the United States.
- [3] Green, D. C. (1982). Digital Electronics Technology, Pitman Publishing Ltd. New Zealand.
- [4] Theraja B.L. & Theraja A.K. (2002). A textbook of Electrical Technology, S. Chand and Company Ltd. New Delhi.

Cite this article as :

Vikas Choudhary, Mukul Thakur, Deepanshu Singh, Tanuj Choudhary, Harpreet Kaur, "Designing and Implementation of a Fingerprint Lock System", International Journal of Scientific Research in Computer Science, Engineering and Information Technology (IJSRCSEIT), ISSN : 2456-3307, Volume 5, Issue 6, pp.23-27, November-December-2019.