

An Enhanced Energy Efficient Routing Protocol over Wireless Sensor Networks

Rajshekhhar S A¹, Arun Biradar²

¹Research Scholar, Department of CSE, East West Institute of Technology, Bengaluru, Karnataka , India

²Research Supervisor, School of CSE, REVA University, Bengaluru, Karnataka, India

ABSTRACT

Article Info

Publication Issue :

Volume 8, Issue 5
September-October-2022

Page Number : 283-293

Article History

Accepted: 10 Oct 2022
Published: 28 Oct 2022

Cluster-based hierarchical routing protocols play an essential role in decreasing the energy consumption of wireless sensor networks (WSNs). A low-energy adaptive clustering hierarchy (LEACH) has been proposed as an application-specific protocol architecture for WSNs. However, without considering the distribution of the cluster heads (CHs) in the rotation basis, the LEACH protocol will increase the energy consumption of the network. To improve the energy efficiency of the WSN, we propose a novel modified routing protocol in this paper. The newly proposed improved energy-efficient LEACH (IEE-LEACH) protocol considers the residual node energy and the average energy of the networks. To achieve satisfactory performance in terms of reducing the sensor energy consumption, the proposed IEE-LEACH accounts for the numbers of the optimal CHs and prohibits the nodes that are closer to the base station (BS) to join in the cluster formation. Furthermore, the proposed IEE-LEACH uses a new threshold for electing CHs among the sensor nodes, and employs single hop, multi-hop, and hybrid communications to further enhance the energy efficiency of the networks. The simulation results demonstrate that, compared with some existing routing protocols, the proposed protocol substantially reduces the energy consumption of WSNs.

Keywords: Wireless Sensor Networks, Routing Protocol, Energy Efficiency, Network Lifetime

I. INTRODUCTION

Wireless sensor networks (WSNs) generally consist of considerable sensor nodes (SNs) with limited energy. WSNs are randomly deployed in a particular region to acquire various types of environmental parameters and transmit information to the base station (BS) for

monitoring and detecting applications [1]. They have been widely applied in forest fire detection, surveillance, military, human health detection, etc., and thus have attracted the interest of researchers in recent years [2,3]. Because WSNs are usually deployed in hazardous environments, recharging or replacing the batteries of the SNs is very difficult.

Moreover, the manual operation of the network is highly difficult, which brings some challenges regarding the application of WSNs [4–6]. To remedy these drawbacks, the efficient use of the battery energy of SNs should be considered as a primary goal when researchers design protocols and hardware architectures [7]. Therefore, several routing protocols have been proposed to render the sensor network more energy efficient [8,9].

The cluster formation and various communication modes of transmitting data have been the most emphasized approaches. In general, compared with non-clustering protocols, cluster-based routing protocols can efficiently use the SNs in the network [10]. A cluster leader, called the cluster head (CH), is in charge of eliminating the correlated data that can decrease the final data volume. Afterwards, the CH will transmit the aggregated data to the BS [11–13]. In cluster-based routing protocols, SNs are divided into many clusters to decrease energy consumption for long distance communication. The clustering can minimize the overall energy consumption and balance the nodes' workload, which is caused by the large difference in the energy depletion between the CHs and other nodes. Therefore, clustering is an energy-efficient solution for increasing network longevity and improving energy efficiency. Moreover, most clustering protocols adopt optimal CH selection to avoid the premature death of the SNs and further extend the lifetime of the network [14–16].

According to [17], we know that SNs consume more energy during communication than during the computation process. In contrast, some other protocols adopt multi-hop communication, and the nodes close to the BS have excessive transmission overhead, leading to energy holes in the sensor field [18]. To address the energy hole problem and prolong the network lifetime, many clustering protocols have been specifically proposed for WSNs. The low-energy adaptive clustering hierarchy (LEACH) is the most important hierarchical routing

protocol in terms of saving energy compared with traditional routing protocols [19]. In this type of protocol, the entire network is divided into several clusters, and each cluster selects a node in a probabilistic manner as a CH that is in charge of receiving, aggregating, compressing, and sending the information collected from other non-CH nodes to the BS. With the objective of minimizing the energy consumption of the WSNs, the LEACH routing protocol designates a single CH node in each cluster and selects the CH on a rotation basis. Although the efficiency of the LEACH protocol has been closely studied, it still has some drawbacks that require enhancement—on one hand because selecting the CH is based on a random round robin, the number of CHs is unreasonable in each round, and the nodes at the boundary of the network will be elected as the CH. On the other hand, there is no consideration of the distribution of the CHs, the threshold condition, and the remaining energy of each node after the end of each round. Consequently, these issues will result in energy overheads.

To remedy this problem, based on this classical hierarchical clustering protocol, a variety of protocols have been proposed [19]. In contrast to the LEACH protocol, a novel distributed protocol called the scalable energy-efficient clustering hierarchy (SEECH) assigns CHs and relays roles to different nodes [20]. This protocol generates two fitness functions to determine the capability to become a CH or relay for each node by only taking their energy consumption into account. However, in the SEECH protocol, every node may be elected to be a CH or a relay, including the nodes closer to the BS, which increases the energy consumption. A learning automata-based multilevel heterogeneous routing (LA-MHR) scheme was proposed in [21]. The LA-MHR utilizes S-model-based learning automata for selecting CHs, while the cognitive radio spectrum is allocated by the BS. In addition, single hop communication among different SNs is replaced by a multi-hop communication approach

in the LA-MHR scheme. Since a single communication approach is not suitable for scenes in which the CHs are far from the SNs, this approach requires a large amount of transmission power. The LEACH-Mobile (LEACH-M) protocol is proposed for mobile nodes to improve data transfer success rate [22]; however, the cluster head selection and cluster formation for LEACH-M are similar to the LEACH protocol. Because of the high control overheads, the energy dissipation of LEACH-M is greater than LEACH.

The optical LEACH (O-LEACH) protocol divides and links a series of WSNs that is around the distributed fiber sensors (DFS) in the hybrid sensor network with a rectangular topology [23]. Compared with LEACH, this method extends the lifetime of WSNs and exhibits good energy efficiency. However, the energy consumption of O-LEACH is not improved. The stable energy efficient network (SEEN) has been proposed for WSNs [24]. The selection of Cluster Head in this protocol is done on the basis of the residual energy of nodes as well as the distance parameter. In wireless sensor networks, few sensor nodes are equipped with higher processing and communicating capabilities. In [25], an energy consumption-minimizing strategy called LEACH-XMP (LEACH-eXtended Message-Passing) was proposed, which adopts a sophisticated energy consumption model for CH nodes without oversimplification. These protocols aim to merely distribute the energy consumption between the CH and its assistant at the beginning of the first round. This distribution will result in a reduction in the network lifetime.

To overcome the drawbacks of conventional methods and further prolong the lifetime of WSNs, we propose a novel improved energy-efficient LEACH (IEE-LEACH) routing protocol in this paper. In the proposed protocol, the threshold setting introduces four parameters including the initial energy of nodes, residual energy of nodes,

total energy of the network, and average energy of the network. In the proposed IEE-LEACH protocol, the node closer to the BS than the CH does not take part in the cluster formation. Thus, the protocol can balance the energy load and decrease the energy consumption. Furthermore, the proposed IEE-LEACH protocol compares the energy consumption of single hop and multi-hop communication modes in the data transmission phase. The communication mode with the least energy consumption will be adopted. Therefore, the proposed approach decreases the overall communication cost and significantly improves the network lifetime.

The remainder of this paper is organized as follows. Section 2 briefly introduces the system model. The proposed IEE-LEACH protocol is indicated in Section 3. We demonstrate the performance evaluation of the proposed protocol via simulations compared to the conventional protocols in Section 4. Finally, conclusions are drawn in Section 5.

II. SYSTEM ARCHITECTURE

An easy way to comply with the conference paper 2.1 Network Model and Assumptions

In this section, the sensor network is introduced as the WSN model. The n SNs are uniformly and randomly placed in $L * L$ square area and are manually deployed in a complex environment. The set of SNs is given by

$$S = (s_1, s_2, \dots, s_n) \dots \dots \dots (1)$$

The structure of the network is illustrated in Figure 1, Each cluster has its own CH and cluster members. Each cluster member collects the data and forwards it to the CH. Then, all CHs with the function of aggregating and compressing the information will process the data and then transmit the information to the sink node.

During the deployment of the nodes, the underlying network model and the deployment of SNs are assumed as follows:

- (1) A sink node that is relatively far from the WSN is powered by manually, without considering the energy consumption issue.
- (2) The SNs and sink node are immobile.
- (3) The SNs are set with the same initial energy, and each SN is assigned a unique identification in the network.
- (4) The SNs have the ability to adjust the wireless transmission power on the basis of a specific situation.
- (5) The node senses the information of the surrounding environment and is in the state of sending data all the time

2.2. Energy Consumption Model

The radio hardware energy consumption model is shown in Figure 2. The radio electronics and the power amplifier are run by the transmitter, and the radio electronics are also run by the receiver. Both operations consume energy. The energy consumption model adopts the free space channel with d^2 energy consumption and the multipath channel with d^4 energy consumption depending on the distance between the transmitter and the receiver [16–20]. Thus, to transmit a packet of m bits at a distance d , the energy consumption is given by the following equation

$$E_{RX} = m * E_{elec}. \quad (3)$$

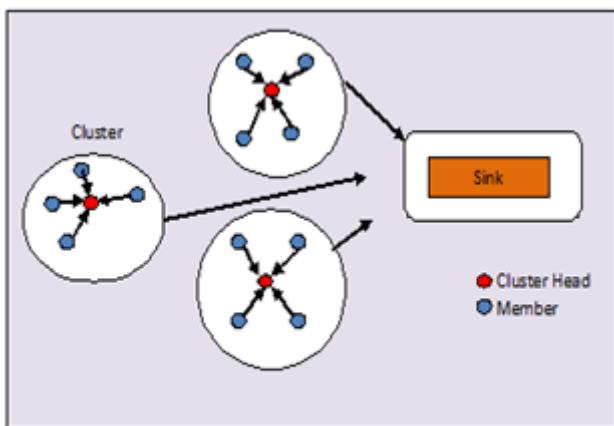
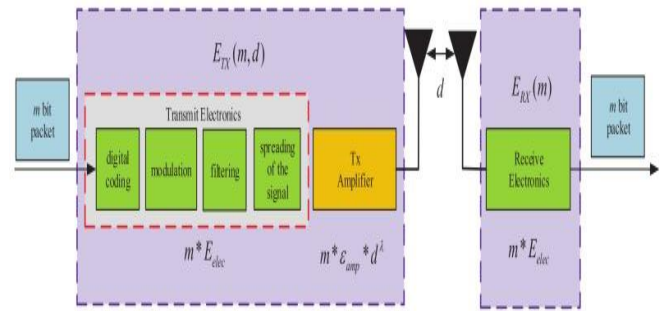


Figure 1: Structure of the Network



III. PROPOSED METHDOLOGY

3. Proposed Methodology

3.1. LEACH Protocol

The LEACH protocol plays an important role in the field of WSNs [26,27]. In the CH election phase, the CH of every cluster compresses the data collected from the member nodes and then sends them to the sink node [9]. The mechanism of selecting the CH is determined by the threshold value $T(n)$ and the rand function. The SN generates a random number $M(0 \leq M < 1)$. If it is satisfied with $M \leq T(n)$, the node is elected as the head node of the cluster for the current round. The limit value $T(n)$ is calculated as follows:

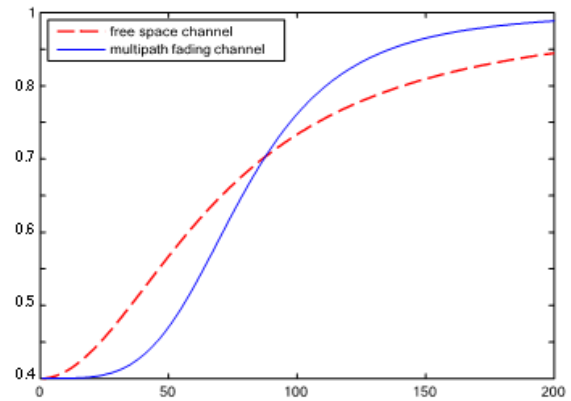
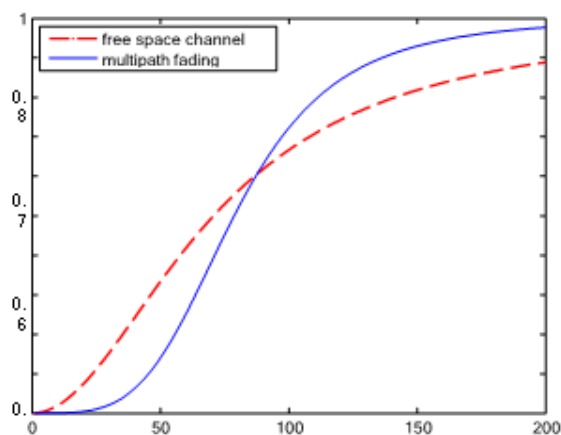
$$T(n) = \frac{p}{1 - p * (r * \text{mod}(1/p))} \quad (2)$$

where p is the ratio of the total number of CHs to SNs and represents the probability of each node becoming CH during round 0 [4], r is the current number of rounds, G is the set of the nodes that will not be elected as a CH in a recent $1/p$ round, and $\text{mod}(\cdot)$ denotes the modulus operator. The power amplifier energy consumption to total energy consumption ratio versus the distance is shown in figure 3.

The LEACH protocol adopts the concept of clustering and periodic data collection, which can reduce the data transmission between the nodes and the BS. Therefore, this protocol can not only reduce the energy loss, but also can extend the network lifetime. In addition, the CH uses the method of data aggregation, which can reduce correlated data locally. This method can also optimize the amount of data in the network and reduce energy consumption. Moreover, the time division multiple access (TDMA)

schedule used by LEACH allows the member nodes to go into sleep mode, and this mechanism holds back the collision between clusters and extends the sensors' battery life [28–30]. However, the density of nodes is not considered in the traditional LEACH protocol when selecting the CH. The placement of nodes and the expected number of CHs per round are considered when assigning CHs. Therefore, this protocol cannot ensure the uniform distribution of the CHs [31]. Additionally, the LEACH protocol does not consider the residual energy of nodes and the average energy of all nodes when selecting the CH.

This will lead to a node with a lower energy being chosen as the CH. Thus, this protocol leads to the quick exhaustion of the node energy [31]. Finally, the CH communicates directly with the BS by adopting a single hop communication mode. If the BS is far from some of the CH nodes, about 80% of the energy consumption of the node comes from the power loss of the long-distance data transmission [4]. Under the free space channel model, the power amplifier energy consumption to total energy consumption ratio is about 80% when $d \approx 141$ m. Therefore, looking towards real applications, it is necessary to develop an energy-efficient protocol to decrease the energy loss of the WSN.



3.2 Improved Energy-Efficient LEACH Protocol

To decrease the energy loss and increase the energy efficiency of the WSNs, we propose a novel improved energy-efficient LEACH protocol called IEE-LEACH in this section.

3.2.1 Energy Consumption Model of the IEE-LEACH Protocol

The energy consumption model of the proposed IEE-LEACH protocol is introduced in this section. Unlike the LEACH protocol, in which nodes with the same initial energy are considered, each SN in the IEE-LEACH protocol is assigned a different initial energy. It is assumed that there are N nodes that are placed in an $L \times L$ region, and the proposed IEE-LEACH protocol takes two models into accounts, i.e., the free space model and multipath model.

3.2.2 Cluster Formation Algorithm of the Proposed IEE-LEACH

Once the election of CHs is completed, the CHs will inform the other nodes of the information that they have become the CH in this round. To complete this function, each CH node will send an advertisement message to all the other nodes in the form of broadcast with a non-persistent carrier-sense multiple access (CSMA) MAC protocol [33]. Each member node decides whether to participate in cluster formation, according to the signal intensity of the message that is transmitted from the BS and each CH node. Since the symmetric propagation channel model is used by the proposed IEE-LEACH protocol,

the election of a cluster head is only related to the pure signal strength [15].

The stronger the received signal is, the closer the distance between member nodes to the sink node or the CH is. Comparing the distance of the nodes to the CHs and that of the nodes to the BS, the nodes closer to the base station do not participate in cluster formation and directly send data information to the BS. As shown in Figure 4, when the cluster head in the network is elected and the cluster head broadcasts messages to other nodes, the non-cluster head node A finds the nearest cluster head B according to the received signal strength, and calculates the distance between them, i.e., d_{AB} . When $d_{AB} > d_{AtoBS}$ (d_{AtoBS} denotes the distance between the node A and BS), node A does not join any cluster and communicates directly with the base station during the data communication. When $d_{AB} < d_{AtoBS}$, node A joins the cluster where cluster head B is located and acts as a member node in the cluster.

This means that not all nodes in the WSN participate in cluster formation. A node closer to the CH decides to join the cluster whose CH transmits the strongest signal to the nodes by comparing all the signal intensities of the messages sent by the CHs. After each node closer to the CH determines which CH will join, it needs to inform the CH that it has become a member node of this cluster. Each node closer to the CH sends a join-request message (Join-REQ) to the chosen CH, which includes the node's identification and the CH's identification.

Figure 5 shows the process of CH selection and cluster formation of the proposed IEE-LEACH protocol. First, the related energy and the distance to the BS are calculated. Then, the threshold $T(s_i)$ in each round is determined by Equation (17). Each node closer to the CH needs to generate a random number and then compare it with $T(s_i)$. If the result is less than or equal to $T(s_i)$, then the node will be chosen as the CH. The distance to CH is calculated. The nodes whose distance is closer to the BS rather than the CH will not take part in the process of cluster formation and

will directly transmit data to the BS. Finally, the transmitted data adopt the method of single hop, multi-hop and hybrid communications.

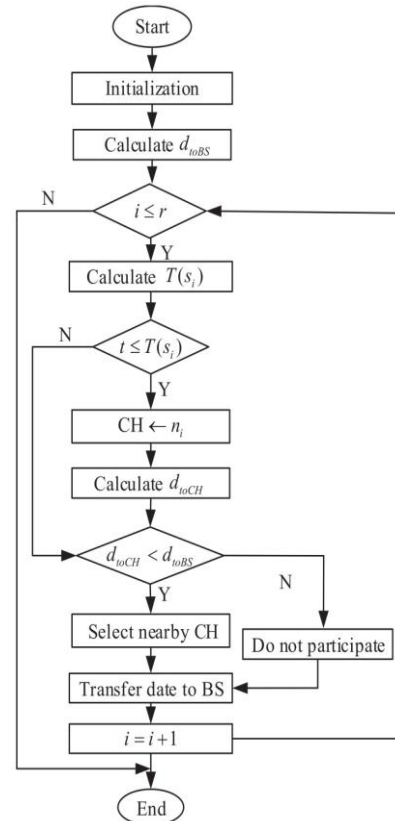


Figure 5. Block diagram of proposed protocol

Algorithm 1. Proposed IEE-LEACH

1. **Input:** N -number of nodes, r -number of rounds.
2. The first step is to initialize the network parameters for WSN.
3. The second step is the random deployment of the nodes in the network.
4. The third step is the deployment of the BS in the network.
5. Calculate d_{toBS}
6. for $i = 1$ to r
7. $E_a = E_t(1 - r^i) / n$
8. $p_i = p * n * E^i * E_j / (E_t * E_a)$
9. $T(s_i) = p_i / (1 - p_i(r \bmod (1/p_i)))$
10. $t = \text{Random number}$
11. If $(t \leq T(s_i))$

12. CH $\leftarrow n_i$
13. Calculate d_{toCH}
14. end if
15. if ($d_{toCH} < d_{toBS}$)
16. Select CH and join the cluster;
17. else
18. Nodes do not participate in the cluster
19. end if
20. Transfer to BS
21. $i=i+1$
22. go to step 6
- end

4. Results and Discussion

In this section, to evaluate the performance of the proposed IEE-LEACH protocol in the WSN, the existing LEACH, LEACH-Centralized (LEACH-C) [18], LEACH-M [22], O-LEACH [23], energy-efficient LEACH (EE-LEACH) [36], Stable Energy Efficient Network (SEEN) [24], and LEACH-eXtended Message-Passing (LEACH-XMP) [25] protocols are used in comparison in the simulation experiments. Simulation experiments were carried out using NS-2 simulator Tool.

A wireless sensor network system model consisting of 100 homogeneous SNs [37] randomly distributed in $100\text{ m} \times 100\text{ m}$ square area with different initial energies is considered. The BS is placed at the coordinate (50, 100). Therefore, the maximum distance between the SN and the BS is $50\sqrt{2}\text{m}$ (approximately 111.8 m). We run the simulation for 3500 rounds, and the value of the time interval between rounds is 20 s [4]. Table 1 shows the parameter configurations in the WSN that are employed in the simulation.

Table 1. Simulation parameters Considered

Parameters	Values
E_{elec}	50 nJ/bit
E_{DA}	5 nJ/bit/signal
Transmitter Amplifier (ϵ_{fs}) if d	d_0
E_{elec}	50 nJ/bit
p	0.05
d_0	87 m
Data Packet Size	4000 bits
	1 packet/s
Data Packet rate	

4.1 Network Lifetime and Stability Period

This simulation illustrates the network lifetime of the proposed IEE-LEACH protocol compared with the other existing protocols. The number of dead nodes versus the number of rounds in the WSNs is shown in Figure 6. It is obvious that the nodes start to die after 1678 rounds, 1933 rounds, 2178 rounds, 1836 rounds, 2326 rounds, and 2416 rounds for LEACH, LEACH-M, O-LEACH, LEACH-C, EE-LEACH, and SEEN protocols, respectively. However, for the proposed IEE-LEACH, the nodes do not start to die until 2636 rounds. In addition, the number of rounds for all the nodes dead in the IEE-LEACH protocol is 3160 rounds as compared to 2245 rounds in the LEACH protocol. From the obtained results, the IEE-LEACH improves the network lifetime by approximately 9% to 57% compared with the other protocols.

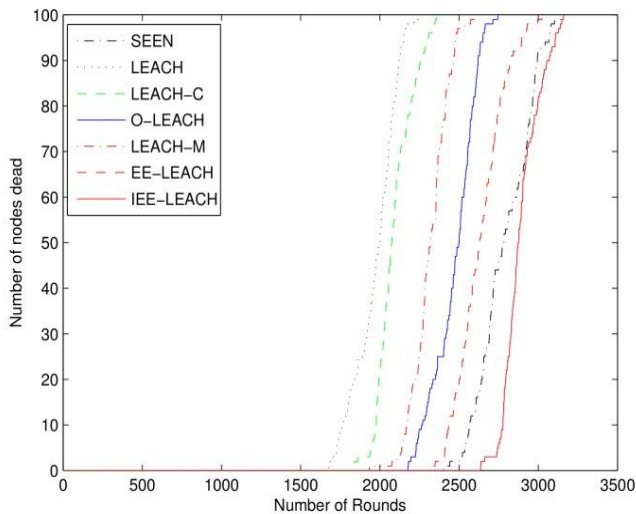


Figure 6. Comparison of life cycle.

4.2 Residual Nodes Energy

In this test, the effect of the residual nodes energy on the performance is shown. The residual energy of all SNs in the network for the protocols is illustrated in Figure 7. The proposed IEE-LEACH exhibits a slower decrease as the number of rounds increase than a variety of routing protocols. All nodes in the existing LEACH, LEACH-M, O-LEACH, LEACH-C, EE-LEACH, and SEEN protocols are dead after 2267, 2492, 2972, 2422, 3053, and 2889 rounds, respectively. However, all nodes in the proposed IEE-LEACH are dead after 3242 rounds. It can be seen that the new proposed threshold that considers the initial energy of nodes, residual energy of nodes, total energy of the network, and average energy of all nodes increases the network lifetime by about 6% to 43% compared with other routing protocols. Therefore, the strategy presented by the proposed IEE-LEACH protocol can effectively reduce the dissipated energy and extend the lifetime of the network

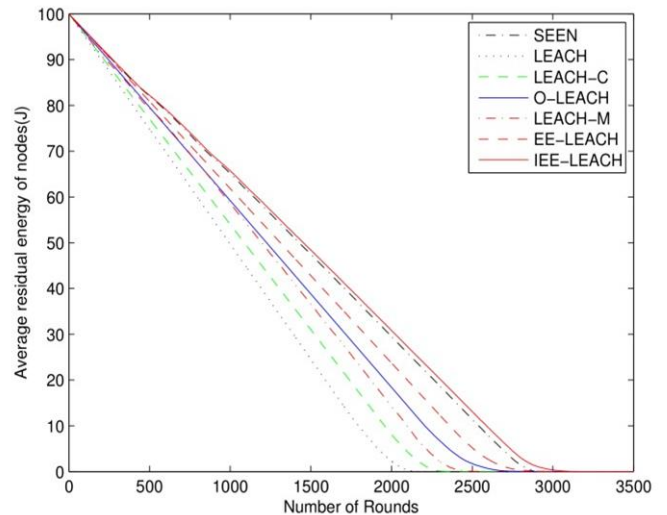


Figure 7 : Comparison of residual energy of nodes.

4.3 Compared with the LEACH protocol

The proposed IEE-LEACH increases throughput by nearly a factor of 7. Specifically, this method greatly improves the information transmission performance of the network. In addition, compared with the IEE-LEACH-B, the IEE-LEACH has an approximately 30% increase in network throughput. In terms of the amount of transmitted data, the proposed IEE-LEACH protocol sends much more data to the BS in the same round than other protocols.

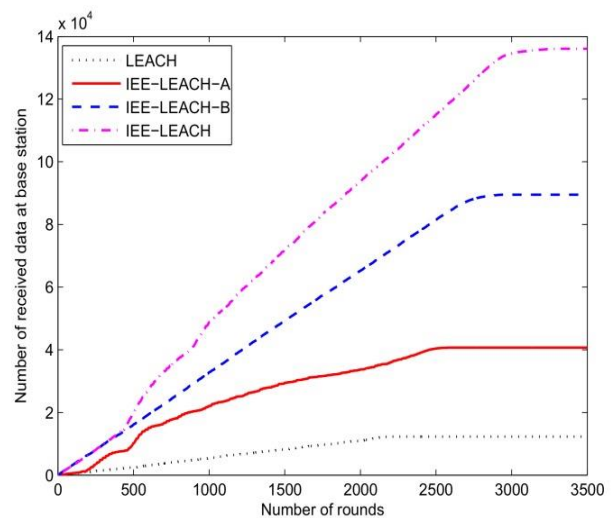


Figure 8. Comparison of data transmission.

As indicated in Tables 3 among the different routing protocols, our protocol can achieve longer network lifetime and lower energy consumption than the others in various scale sensor fields, which is of great significance for diverse practical applications.

Table 3. A performance comparison between different protocols in a 100 m × 100 m sensor field.

Protocol	Lifetime	Residual Energy	Total Energy Consumption
LEACH	1678	2267	2267
EE-LEACH	2326	3053	3114
SEEN	2416	2889	2990
LEACH-C	1836	2422	2723
O-LEACH	2178	2972	2972
LEACH-M	1933	2492	2775
IEE-LEACH	2636	3242	3242

IV. CONCLUSION

In this paper, a novel clustering protocol, named IEE-LEACH, is proposed to reduce energy consumption and improve the lifetime of WSNs. Compared with the existing routing protocols, the threshold of the proposed IEE-LEACH protocol introduces four parameters: the initial energy of nodes, residual energy of nodes, total energy of the network and average energy of all nodes. This mechanism can improve the robustness of the network and extend the network lifetime. In addition, the proposed protocol can optimize the number of CHs and their distributions, which can effectively reduce the energy consumption. Furthermore, to decrease the energy consumption, we consider that the nodes closer to the BS do not participate in cluster formation. Moreover, the proposed protocol employs single hop, multi-hop, and hybrid communications instead of a single communication mode in data transmission. Therefore, the proposed approach decreases the overall communication cost and significantly improves the network lifetime. The simulation results demonstrate that the proposed IEE-LEACH protocol has a better

energy consumption distribution and is more reliable and energy-efficient than some existing protocols.

V. REFERENCES

- [1]. Zhang, D.; Li, G.; Zheng, K.; Ming, X.; Pan, Z. An energy-balanced routing method based on forward-aware factor for wireless sensor networks. *IEEE Trans. Ind. Inform.* 2021, 10, 766–773. [CrossRef]
- [2]. Sobrinho, J.L. Correctness of routing vector protocols as a property of network cycles. *IEEE Trans. Netw.* 2021, 25, 150–163. [CrossRef]
- [3]. Mouapi, A.; Hakem, N. A new approach to design autonomous wireless sensor node based on RF energy harvesting system. *Sensors* 2018, 18, 133. [CrossRef] [PubMed]
- [4]. Zhang, Y.; Liu, M.; Liu, Q. An energy-balanced clustering protocol based on an improved CFSFDP algorithm for wireless sensor networks. *Sensors* 2018, 18, 881. [CrossRef] [PubMed]
- [5]. Bahbahani, M.S.; Alsusa, E. A cooperative clustering protocol with duty cycling for energy harvesting enabled wireless sensor networks. *IEEE Trans. Wirel. Commun.* 2018, 17, 101–111. [CrossRef]
- [6]. Li, X.F.; Xu, L.Z.; Wang, H.B.; Song, J.; Yang, S.X. A differential evolution-based routing algorithm for environmental monitoring wireless sensor networks. *Sensors* 2010, 10, 5425–5442. [CrossRef] [PubMed]
- [7]. Ma, T.; Hempel, M.; Peng, D.; Sharif, H. A survey of energy-efficient compression and communication techniques for multimedia in resource constrained systems. *IEEE Commun. Surv. Tutor.* 2013, 15, 963–972. [CrossRef]
- [8]. Shen, J.; Wang, A.; Wang, C.; Hung, P.C.K.; Lai, C. An efficient centroid-based routing protocol for energy management in WSN-assisted IoT. *IEEE Access* 2017, 5, 18469–18479. [CrossRef]

- [9]. Sohn, I.; Lee, J.; Lee, S.H. Low-energy adaptive clustering hierarchy using affinity propagation for wireless sensor networks. *IEEE Commun. Lett.* 2016, 20, 558–561. [CrossRef]
- [10]. Zhao, Z.; Xu, K.; Hui, G.; Hu, L. An energy-efficient clustering routing protocol for wireless sensor networks based on AGNES with balanced energy consumption optimization. *Sensors* 2018, 18, 3938. [CrossRef]
- [11]. Heinzelman, W.R.; Chandrakasan, A.; Balakrishnan, H. Energy-efficient communication protocol for wireless microsensor networks. In *Proceedings of the 33rd Annual Hawaii International Conference on System Sciences (HICSS)*, Maui, HI, USA, 7 January 2000; pp. 1–10.
- [12]. Roy, N.R.; Chandra, P. A note on optimum cluster estimation in LEACH protocol. *IEEE Access* 2018, 6, 65690–65696. [CrossRef]
- [13]. Hosen, A.; Cho, G. An energy centric cluster-based routing protocol for wireless sensor networks. *Sensors* 2018, 18, 1520. [CrossRef] [PubMed]
- [14]. Sharma, D.; Bhondekar, A.P. Traffic and energy aware routing for heterogeneous wireless sensor networks. *IEEE Commun. Lett.* 2018, 22, 1608–1611. [CrossRef]
- [15]. Kaur, T.; Kumar, D. Particle swarm optimization-based unequal and fault tolerant clustering protocol for wireless sensor networks. *IEEE Sens. J.* 2018, 18, 4614–4622. [CrossRef]
- [16]. Behera, T.M.; Samal, U.C.; Mohapatra, S.K. Energy-efficient modified LEACH protocol for IoT application. *IET Wirel. Sens. Syst.* 2018, 8, 223–228. [CrossRef]
- [17]. Obaidat, M.S.; Misra, S. *Principles of Wireless Sensor Networks*; Cambridge Univ. Press: Cambridge, UK, 2014.
- [18]. Alnawafa, E.; Marghescu, I. New energy efficient multi-hop routing techniques for wireless sensor networks: Static and dynamic techniques. *Sensors* 2018, 18, 1863. [CrossRef] [PubMed]
- [19]. Jadoon, R.; Zhou, W.; Jadoon, W.; Ahmed Khan, I. RARZ: Ring-zone based routing protocol for wireless sensor networks. *Appl. Sci.* 2018, 8, 1023. [CrossRef]
- [20]. Tarhani, M.; Kaviani, Y.S.; Siavoshi, S. SEECH: Scalable energy efficient clustering hierarchy protocol in wireless sensor networks. *IEEE Sens. J.* 2014, 14, 3944–3954. [CrossRef]
- [21]. Tanwar, S.; Tyagi, S.; Kumar, N.; Obaidat, M.S. LA-MHR: Learning automata based multilevel heterogeneous routing for opportunistic shared spectrum access to enhance lifetime of WSN. *IEEE Syst. J.* 2019, 13, 313–323. [CrossRef]
- [22]. Kim, D.S.; Chung, Y.J. Self-organization routing protocol supporting mobile nodes for wireless sensor network. In *Proceedings of the First International Multi-Symposiums on Computer and Computational Sciences (IMSCCS'06)*, Hangzhou, China, 20–24 June 2006; pp. 622–626.
- [23]. Yan, L.; Pan, W.; Luo, B.; Li, X.; Liu, J. Modified energy-efficient protocol for wireless sensor networks in the presence of distributed optical fiber sensor link. *IEEE Sens. J.* 2011, 11, 1815–1819. [CrossRef]
- [24]. Priyadarshi, R.; Singh, L.; Singh, A.; Thakur, A. SEEN: Stable energy efficient network for wireless sensor network. In *Proceedings of the 2018 5th International Conference on Signal Processing and Integrated Networks (SPIN)*, Noida, India, 22–23 February 2018; pp. 338–342.
- [25]. Kang, J.; Sohn, I.; Lee, S. Enhanced message-passing based LEACH protocol for wireless sensor networks. *Sensors* 2019, 19, 75. [CrossRef] [PubMed]
- [26]. Heinzelman, W.B.; Chandrakasan, A.P.; Balakrishnan, H. An application-specific protocol architecture for wireless microsensor

- networks. IEEE Trans. Wirel. Commun. 2002, 1, 660–670. [CrossRef]
- [27]. Tümer, A.E.; Gündüz, M. Energy-efficient and fast data gathering protocols for indoor wireless sensor networks. Sensors 2010, 10, 8054–8069. [CrossRef] [PubMed]
- [28]. Cheng, H.J.; Su, Z.H.; Xiong, N.X.; Xiao, Y. Energy-efficient nodes scheduling algorithms for wireless sensor networks using Markov random field model. Inf. Sci. 2016, 329, 461–477. [CrossRef]
- [29]. Hoang, D.C.; Yadav, P.; Kumar, R.; Panda, S.K. Real-time implementation of a harmony search algorithm-based clustering protocol for energy-efficient wireless sensor networks. IEEE Trans. Ind. Inf. 2014, 10, 774–783. [CrossRef]
- [30]. Noh, Y.; Lee, D. BCoPS: An energy-efficient routing protocol with coverage preservation. IET Commun. 2017, 11, 1933–1940. [CrossRef]

Cite this article as :

Rajshekhar S A, Arun Biradar, "An Enhanced Energy Efficient Routing Protocol over Wireless Sensor Networks", International Journal of Scientific Research in Computer Science, Engineering and Information Technology (IJSRCSEIT), ISSN : 2456-3307, Volume 8 Issue 5, pp. 283-293, September-October 2022. Available at doi : <https://doi.org/10.32628/CSEIT228545>
Journal URL : <https://ijsrcseit.com/CSEIT228545>