

Predicting Brain Age using Machine Learning Algorithms : A Comprehensive Evaluation

¹ Tanneeru Sudha Rani,² M.Aparna, ³ P.Bhavani

¹ Assistant Professor, Department of Information Technology, Bhoj Reddy Engineering College for Women, Hyderabad, India

^{2,3} Students, Department of Information Technology, Bhoj Reddy Engineering College for Women, Hyderabad, India

ARTICLE INFO

Article History:

Accepted: 10 April 2023

Published: 30 April 2023

Publication Issue

Volume 9, Issue 2

March-April-2023

Page Number

685-688

ABSTRACT

Medical imaging is gaining importance with an increase in the demand for automated, reliable, fast and efficient diagnosis which can provide insight into the image better than human eyes. The brain tumor is the second leading cause for cancer-related deaths in men age 20 to 39 and leading cause cancer among women in the same age group. Brain tumors are painful and should end in various diseases if not cured properly. The diagnosis of the tumor is a very important part of its treatment. Identification plays an important part in the diagnosis of benign and malignant tumors. A prime reason behind a rise in the number of cancer patients worldwide is the ignorance towards the treatment of a tumor in its early stages. This paper discusses such a machine learning algorithm that can write the user about the details of the tumor using brain MRI. These methods include noise removal and sharpening of the image along with basic morphological functions, erosion, and dilation, to obtain the background. Subtractions of background and its negative from different sets of images result in extracted in age. Plotting contour and c-label of the tumor and its boundary provides us with information related to the tumor that can help in a better visualization in diagnosing cases. This process helps in identifying the size, shape, and position of the tumor. It helps the medical staff as well the patient to understand the seriousness of the tumor with the help of different color-labeling for different levels of elevation. A GUI for the contour of the tumor and its boundary can provide information to the medical staff on the click of user choice buttons.

Keywords: classification, convolutional neural network, feature extraction, machine learning, magnetic resonance imaging, segmentation, texture features.

I. INTRODUCTION

The physical body consists of many sorts of cells. Each cell features a specific function. The cells in the body grow and divide in an orderly manner and form some new cells. These new cells help to keep the human body healthy and properly working. When some cells lose their capability to regulate their growth, they grow with none order. The extra cells formed form a mass of tissue that is named as the tumor. The tumors can be benign or malignant. Malignant tumors lead to cancer while benign tumor is not Cancerous. The important think about the diagnosis includes the medical image data obtained from

various biomedical devices that use different imaging techniques like x-ray, CT scan, MRI. Magnetic resonance imaging (MRI) may be a technique that depends on the measurement of magnetic flux vectors that are generated after an appropriate excitation of strong magnetic fields and radiofrequency pulses in the nuclei of hydrogen atoms present in the water molecules of a patient's body. The MRI scan is much better than the CT scan for diagnosis as it doesn't use any radiation. The radiologists can evaluate the brain using MRI. The MRI technique can determine the presence of tumors within the brain. The MRI also contains noise caused thanks to operator intervention which may cause inaccurate classification. The large volume of MRI is to analyze; thus, automated systems are needed because they're less expensive -. Automated detection of tumors in MR images is important as high accuracy is required when handling human life. The supervised and unsupervised machine learning algorithm technique can be employed for the classification of brain MR image either as normal or abnormal. During this paper, an efficient automated classification technique for brain MRI is proposed using machine learning algorithms. The supervised machine learning algorithm is used for classification of brain MR image.

II. RELATED WORK

Joshi proposed brain tumor detection and classification systems in MR images by first extracting the tumor portion from brain image, then extracting the texture features of the detected tumor using gray level co-occurrence matrix (GLCM) and then classified using a neuro-fuzzy classifier. Shasidhar proposed a modified fuzzy c-means (FCM) algorithm for MRI brain tumor detection. The texture features are extracted from the brain MR image and then a modified FCM algorithm is used for brain tumor detection. The average speed-ups of as much as 80 times a traditional FCM algorithm are obtained using the modified FCM algorithm. The modified FCM algorithm is a fast alternative to the traditional FCM technique. Rajesh and malar proposed brain MR image classification based on rough set theory and feed-forward neural network classifier. The features are extracted from MR images using rough set theory. The selected features are fed as input to feed forward neural network classifier which differentiates between the normal and abnormal brain and the accuracy of about 90% is obtained. Ramteke and monali proposed automatic classification of brain MR images in two classes normal and abnormal based on image features and automatic abnormality detection. The statistical texture feature set is obtained from normal and abnormal images and then the KNN classifier is used for classifying an image. The KNN obtain an 80% classification rate. Othman proposed a probabilistic neural network technique for brain tumor classification. Firstly, the features are extracted using the principal component analysis (PCA) and the classification is performed using probabilistic neural network (PNN). Jafari and shafaghi proposed a hybrid approach for brain tumor detection in MR images based on support vector machines (SVM). The texture and intensity features are used. The accuracy of about 83.22% is achieved and is more robust. Thus, from an extensive literature survey, we found that most of the current brain tumor detection system uses texture, symmetry, and intensity as features. Texture features

are important property of the brain as texture perception has a very important aspect in the human visual system of recognition and interpretation. Further, we propose the use of the ml algorithm to overcome the drawbacks of traditional classifiers. We investigate the performance of a machine learning algorithm namely CNN in this work. Neural networks are useful as they can learn complex mappings between input and output. They are capable of solving much more complicated classification tasks.

III. PROPOSED SYSTEM

As per the literature survey, it was found that automation of brain tumor detection is very essential as high accuracy is needed when human life is involved. Automated detection of tumors in MR images involves feature extraction and classification using a machine learning algorithm. In this paper, a system to automatically detect a tumor in MR images is proposed as shown in the figure.

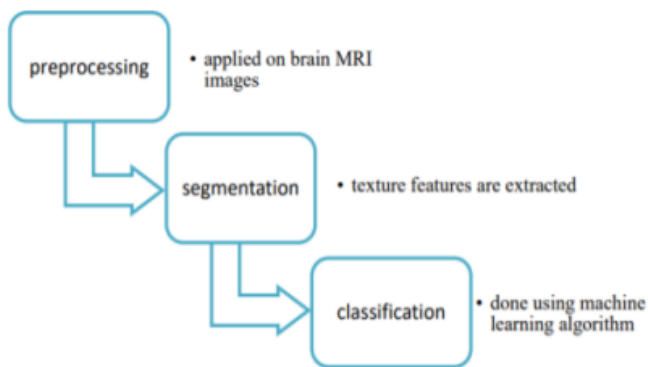


Fig.1.Proposed work

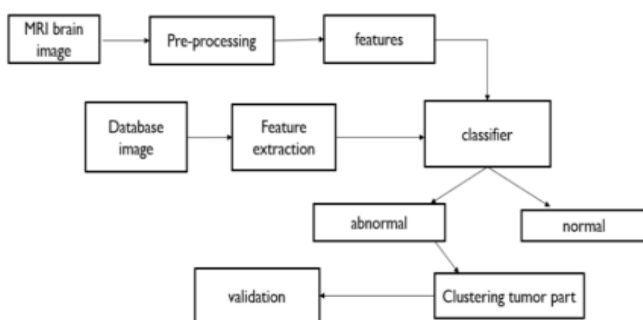


Fig.2.Block diagram

IV.RESULTS

Accuracy as a metric to justify the model performance which can be defined by accuracy (ACC), sensitivity (SE), specificity (SP):

Layer (type)	Output Shape	Param #
vgg16 (Model)	(None, 7, 7, 512)	14714688
flatten_1 (Flatten)	(None, 25088)	0
dropout_1 (Dropout)	(None, 25088)	0
dense_1 (Dense)	(None, 1)	25089
Total params: 14,739,777		
Trainable params: 25,089		
Non-trainable params: 14,714,688		

Fig.3.Experimental Results

V. CONCLUSION

In this proposed work different medical images like MRI brain cancer images are taken for detecting tumor. The proposed approach for brain tumor detection supported convolution neural network categorizes into multi-layer perceptron neural network. The proposed approach utilizes a mixture of this neural network technique and consists of several steps including training the system, pre- processing, implementation of the tensor flow, classification. In the future, we'll take an outsized database and check out to offer more accuracy which can work on any sort of MRI brain tumor.

VI. REFERENCES

- [1]. Pankaj sapra, Rupinder pal Singh, Shivani Khurana, "brain tumor detection using neural network", international journal of science and modern engineering, ijisme, issn: 2319-6386, volume-1, issue-9, august 2013.
- [2]. Prachi gadpayleand, p.s. Mahajani, "detection and classification of brain tumor in MRI images ",

- international journal of emerging trends in electrical and electronics, ijete - issn: 2320-9569, vol. 5, issue. 1, july-2013
- [3]. Bakes.s., Reyes.m., menze, b.: identifying the best machine learning algorithms for brain tumor segmentation, progression assessment, and overall survival prediction in the Brats challenge. In: arxiv:1811.02629 (2018)
- [4]. Bauer s., Nolte, Reyes.m., 2011. Fully automatic segmentation of brain tumor images using support vector machine classification in combination with hierarchical conditional random field regularization., in miccai, pp. 354–361.
- [5]. Prastawa m., Bullitt e., Greig, g., 2004. A brain tumor segmentation framework based on outlier detection. Medical image analysis 8, 275–283.
- [6]. Goodfellow, Warde-Farley, d., mirza, m., Courville, a., bengio, y., 2013b. Maxout networks, in icml.
- [7]. Gotz m., Weber c., Blocher j., Stieltjes b., Meinzer, h.p., Maier-Hein, k., 2014. Extremely randomized trees-based brain tumor segmentation, in proc of brats challenge - miccai.
- [8]. Cardoso, m. J., Sudre, c. H., Modat, m., Ourselin, s., 2015. a template-based multimodal joint generative model of brain data. In: information processing in medical imaging. Springer, pp. 17–29.
- [9]. Erihov, m., Alpert, s., Kiselev, p., Hashoul, s., 2015. A cross saliency approach to asymmetry-based tumor detection. In: medical image computing and computerassisted intervention–miccai 2015. Springer, pp. 636–643.
- [10]. Simonyan k., Zisserman a., 2014. Very deep convolutional networks for large-scale image recognition. Arxiv preprint arxiv:1409.1556
- [11]. M.Aarthilakshmi, is studying final year, Electrical and Electronics Engineering in National Engineering College, Kovilpatti.a. (aarthireshi1399@gmail.com)
- [12]. S. Meenakshi, is studying final year, Electrical and Electronics Engineering in National Engineering College, Kovilpatti. a. (meenasubramanian1998@gmail.com)
- [13]. A.Poolna Pushkala, is studying final year, Electrical and Electronics Engineering in National Engineering College, Kovilpatti.(poorani0527@gmail.com)
- [14]. V.Rama@Ramalakshmi, is studying final year, Electrical and Electronics Engineering in National Engineering College, Kovilpatti. (ramalakshmi2de@gmail.com)
- [15]. Dr.N.B.Prakash is working as Associate Professor in Electrical and Electronics Engineering at National Engineering College, Kovilpatti.(nbpeee@nec.edu.in)

Cite this article as :

Tanneeru Sudha Rani, M. Aparna, P. Bhavani, "Predicting Brain Age using Machine Learning Algorithms : A Comprehensive Evaluation", International Journal of Scientific Research in Computer Science, Engineering and Information Technology (IJSRCSEIT), ISSN : 2456-3307, Volume 9, Issue 2, pp.685-688, March-April-2023.