

# Automatic Brain Tissue Detection of Acute Ischemic Stroke Patients

Amar Madhekar, Pranoti Bawaskar, Pritam Devshatwar, Shubham Deshpande, Smita Chaudhari

Marathwada Mitra Mandal's College of Engineering, Pune, Maharashtra, India

## ARTICLE INFO

### Article History:

Accepted: 10 April 2023

Published: 30 April 2023

### Publication Issue

Volume 10, Issue 2

March-April-2023

### Page Number

634-640

## ABSTRACT

Currently, the different algorithms for detecting tumor range and shape in brain MR images are being implemented and it is now possible to find out the degree of tumor with regard to the given tumor area. The information was gathered via research of various statistical analysis methods which are all based on those individuals who have been diagnosed with brain tumors, and then risk factors and symptoms that appear for all individuals diagnosed with brain tumors were discovered. The advancement of research in medicine day and night aims to provide modern therapeutic approaches. The surgeon physically examines this image in order to identify and diagnose brain tumors. However, this procedure accurately measures the stage and scale of the tumor and accurately distinguishes the stage of the tumor based on the location of the tumor. This dissertation employs k-means and fuzzy c-means algorithms to segment brain tumors and classify tumor cells using CNN (convolution neural network). This approach enables the accurate and reproducible segmentation of tumor tissue equal to manual segmentation. Additionally, it decreases research time and accurately determines the stage of tumor from a given region of tumor.

Keywords : CNN, Clustering, Segmentation, Thresholding, Magnetic Resonance Imaging, Brain-Tipped Tumor.

## I. INTRODUCTION

MRI or CT scans are usually used to image the brain's anatomy. The entire procedure is recorded in this paper using an MRI scan. For diagnosis, an MRI scan is more convenient than a CT scan. It has no adverse effect on the human body. It works by the use of magnetic fields and radio waves. Numerous algorithms have been created for the diagnosis of brain tumors.

However, they may have some disadvantages in terms of identification and extraction.

Two algorithms are used in this work to perform segmentation. Algorithms for clustering K-means and Fuzzy C-means. As a result, it produces a correct tumor segmentation result. Tumors are caused by excessive tissue growth in every portion of the body. Main or secondary tumors are likely. If it is a source, it is

## II. LITERATURE SURVEY

referred to as primary. If a portion of the tumor spreads to another location and grows independently, this is referred to as secondary. Normally, a brain tumor influences the CSF (Cerebral Spinal Fluid). It contributes to strokes. The surgeon treats the strokes rather than the tumor. Thus, early identification of tumors is crucial for successful treatment. When a brain tumor is diagnosed at an early stage, the patient's life expectancy may be extended. This will add about one or two years to the lifespan. Typically, tumor cells are classified into two groups. They are classified as Mass and Malignant. It is somewhat difficult to detect a malignant tumor in a bulk tumor. In this post, we will explore how to diagnose brain tumors using brain MRI images and how to assess the stage of the tumor depending on the given region of tumor. Treatment for a brain tumor is determined by the tumor's form and level, its size and location, as well as the general health and medical records. In the majority of cases, the aim of therapy is to totally eliminate or kill the tumor. The majority of brain tumors are curable if detected and treated early.

An individual who has been diagnosed with some kind of brain tumor is at an elevated risk of having another form of brain tumor. An individual who has two or more close relatives (mother, father, sister, brother, or child) who have developed brain tumors has an increased chance of developing his or her own brain tumor. Occasionally, family members will inherit a mutation that makes the brain more vulnerable and raises the chance of developing a brain tumor. Around 5% of brain tumors are thought to be caused by inherited (genetic) causes or disorders. The aim of this work is to develop a method that can inform people about their estimated risk of developing a brain tumor, whether they are at risk or not, and by how much. Java is used to build the detection platform. Finally, we have systems that detect the tumor and its form, as well as the stage of the tumor, from a given region of the tumor.

For magnetic resonance imaging, the method of image registration and data fusion theory presented here has been modified for the segmentation of the magnetic resonance images. This research aims to propose an image registration and data fusion method that is optimal for segmentation of magnetic resonance images. This method enables the accurate and rapid detection of brain tumors. This device utilizes the K-means algorithm to provide an effective and rapid tool for diagnosing brain tumors [1].

Meena and Raja demonstrated how to use the Spatial Fuzzy C Means (PET-SFCM) is used for PET scan image datasets to cluster data in 3D. To better assist the clustering process, a proposed algorithm incorporates spatial neighborhood information into the FCM and modifies the objective function of each cluster simultaneously. This algorithm has been applied and validated on a large data set of patients with neurodegenerative disorders of the brain, such as Alzheimer's disease. It has been shown to be efficient in real-world patient data sets [2].

In this case, the presented framework features three image segmentation algorithms, namely K-Means clustering, Expectation Maximization, and Normalized Cuts. The main objective of this project is to find a solution to the issue of cutting up a picture into separate regions. When we compare the two unsupervised learning algorithms, K-means and EM, to a graph-based algorithm, the Normalized Cut, we equate them to each other. Clustering algorithms that divide a data set into clusters based on a given distance measure, such as K-means and EM, are two common methods for clustering [3].

Funmilola et al. introduced the Combining the properties of Fuzzy C-means and K-means, the fuzzy K-C-means form can be used. While most of this work has focused on clustering algorithms like k-means and

fuzzy c-means, this portion has done much of the work on both approaches. The k-c-means clustering algorithm was constructed by utilizing these separate algorithms. This allowed the algorithm to provide a more effective result in terms of computational time. the algorithms have been put to the test and proven correct by comparing them to human brain MRI images Results have been thoroughly investigated and reported [4].

Wilson and Dhas, respectively, The SWI technique were used to detect iron in the brain by first using K-means and then using Fuzzy C-means. accurate assessment of iron stores is needed in a number of neurodegenerative diseases because of the relationship between iron accumulation and the aetiology of these diseases a susceptibility the weighted imaging SWI (SWI weighted for sensitivity) assists in getting an accurate depiction of a tissue's properties which are different from the structures under which it is located [5].

The overview of various brain tumor diagnostic techniques provided here contains a full examination of their various types. The main purpose of this article is to provide a comprehensive Type-II fuzzy expert method for diagnosing human brain tumors (Astrocytoma tumors) with T1-weighted Magnetic Resonance Imaging (MRI) with contrast. four distinct modules make up the proposed Type-II fuzzy image processing method: pre-processing, segmentation, feature extraction, and approximate reasoning [6].

Human intuition plays a key role in pattern recognition, and mainstream mathematics cannot accurately accommodate this complicated and ambiguously defined system. This, coupled with the inadequacy of fuzzy mathematics to fully embrace these ideas, has led to the implementation of various fuzzy approaches [7].

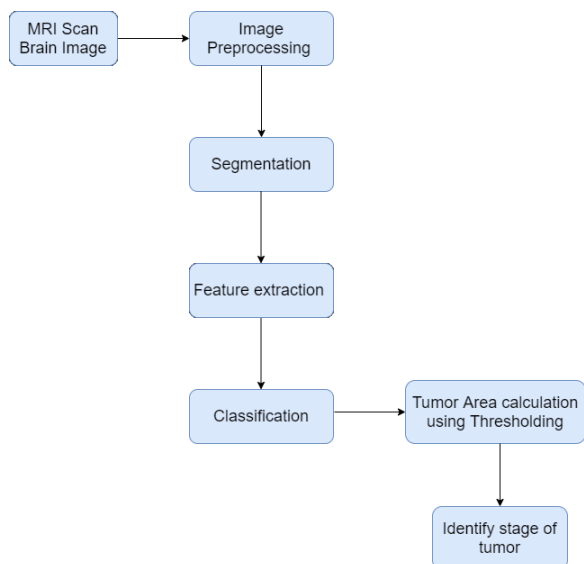
This paper presents a technique that offers an efficient and synergistic algorithm for brain tumour diagnosis, utilizing median filtering, K Means segmentation, FCM segmentation, and a final threshold segmentation. in this method, we aim to improve the accuracy of tumor images obtained via MRI and to use that increased accuracy to guide estimations on the size of the tumors [8].

The author of the presented work is conducting an examination of various algorithms that can be used to color images, text, and gray scale images. When image segmentation is done, the resultant collection of segments or contours will take up the whole image, or a collection of segments and contours will be derived from the image. A pixel in a particular region can be identical in some way, such as color, strength, or texture [9].

This thesis showed how to isolate features from brain images and detect tumors using k-means and C-mean clustering techniques [10].

### III.PROPOSED SYSTEM

The proposed work is a combination of clustering algorithms and classification algorithm, which have been combined to create a new algorithm. The system currently in use has four main modules: preprocessing, segmentation, feature extraction, and classification. This image pre-processing procedure involves applying the median filter to the images. Once Image Segmentation has been completed, K-means and Fuzzy C-means are used to carry out the process. Feature extraction is performed by thresholding images to extract features, and then classification steps are followed to recognize the tumor area and position in MRI images and to identify stage of tumor from the result area of a brain tumor.



**Figure 1 :** Proposed System Architecture

### Pre-processing

In this step, we first removed the noise from an image using the median filter, and then we also got rid of any unwanted images or defects within the image, as well as sharpening the image's edges. This location includes RGB to gray scale conversion and reshaping as well. The algorithm includes a median filter for noise removal. Most modern MRI scans have virtually no noise from transit noise entering the scanner. It is likely that the shipment will show up because of the thermal effect. The main purpose of this project is to detect and identify the tumor cells. But the system itself needs the process of noise removal for complete operation.

### Segmentation

Steps:

1. To specify the number of k clusters, give the cluster value as k.
2. Using a random number generator, select the k cluster centers.
3. The third step is to calculate the mean or the center of the cluster.

4. We must first calculate the distance between each pixel and each cluster center.
5. In a situation where the distance is near to the cluster's center, you should head in that direction.
6. Otherwise, if this cluster does not fit, please choose the next cluster.
7. Use new data to re-estimate the center.
8. Expand by repeating the process until the center does not move.

### Convolution neural network:

#### Convolution Layer

Convolution is the first layer to extract features from an input image (image). Convolution preserves the relationship between pixels by learning image features using small squares of input data. Convolution of an image with different filters can perform operations such as edge detection, blur and sharpen by applying filters i.e., identity filter, edge detection, sharpen, box blur and Gaussian blur filter.

#### Pooling Layer

Pooling layers would reduce the number of parameters when the images are too large. Spatial pooling also called subsampling or down sampling which reduces the dimensionality of each map but retains important information.

#### Fully Connected Layer

In this layer Feature map matrix will be converted as vector (x1, x2, x3, ...). With the fully connected layers, we combined these features together to create a model.

#### Softmax Classifier

Finally, we have an activation function such as softmax or sigmoid to classify the outputs.

#### IV. RESULT AND ANALYSIS

We can consider the brain tumor image depicted in figure 1, which is an MRI of a tumor with the tumor in figure 1. Median filtering is applied on the images that have already been acquired to get rid of the noise. In the graph, you can see the results displayed (See Figure 2).

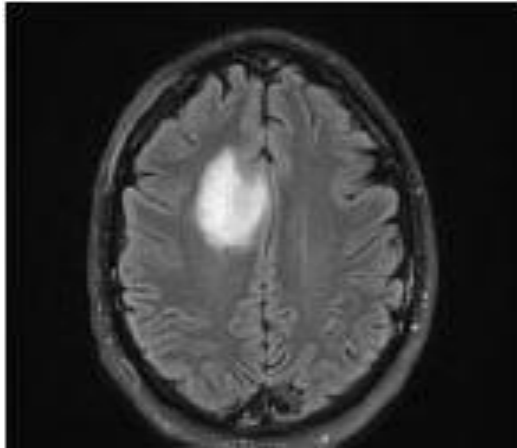


Fig. 1 Brain Tumor Image

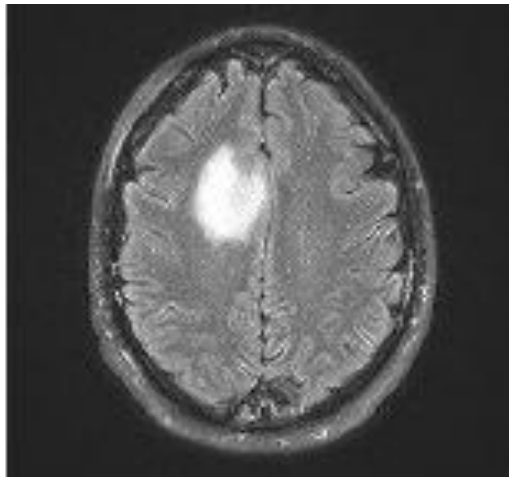


Fig. 2 Median Filtering Outcome

K means algorithm is implemented on such noise filtered images containing brain tumors. In figure 4, a white spot is seen, which is outcome of threshold segmentation on the input image. This region is the area having higher intensity values compared to the defined threshold. Areas with higher intensity values mostly contains ulcer. The outcomes of thresholding segmentation are shown below in figure 3.



Fig. 3 K Means Clustering

Once the K Means Clustering gets over, Fuzzy C-Means segmentation is eventually implemented on the resulted image procured from K Means segmentation. The region affected by ulcer is highlighted in this process. The outcome of the watershed segmentation is shown below in figure 4.

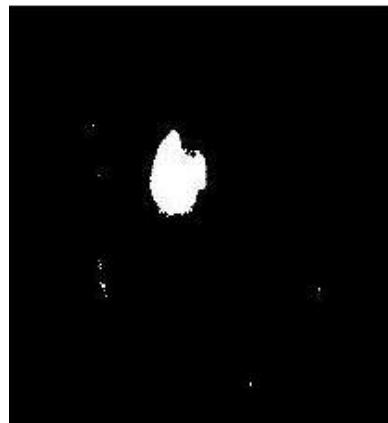


Fig. 4 FCM Segmentation

Eventually, the thresholding segmentation is implemented, once the FCM segmentation is completed. The outcomes are spectacular and intended approach is efficacious in nature to an extent. Figure 5 shows the resultant image procured after the implementation of thresholding segmentation.

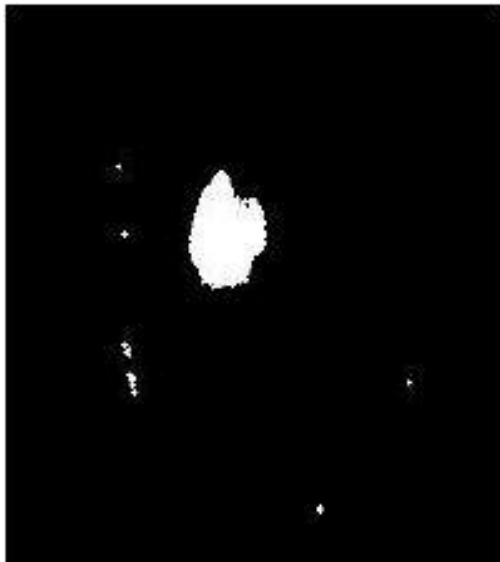


Fig. 5 Thresholding Segmentation



Fig. 6 Output Images of Tumor Area Estimation

The output is displayed above in figure 6.

Additionally, the proposed system is very sensitive to errors because even a small error will lead to the system producing a result in a state of ambiguity, which is unhelpful for diagnosing tumor. Further, it should be noted that both the FCM method and the k-means algorithms are employed to compare each individual performance level to the proposed system and the result of all are compare and we find that the proposed system has less errors in the system.

## V. CONCLUSION

Segmentation of brain tumors is done in this presented work. To start, the image is pre-processed using the median filter technique. If noise is detected in the MR image, it is extracted prior to the K-means phase. The noise-free image is fed into the k-means algorithm, which extracts the tumor from the MRI image. Eventually, estimated logic is used to calculate tumor

area and location, and finally, the resulting area of the tumor is used to identify the stage of the tumor, which is simpler, less expensive, and faster.

## VI. REFERENCES

- [1]. Samir Kumar Bandhyopadhyay and TuhinUtsab Paul, "Automatic Segmentation of Brain Tumor from Multiple Images of Brain MRI" International Journal of Application or Innovation in Engineering & Management (IJAIEEM), Volume 2, Issue 1, January 2013.
- [2]. A. Meena, "Spatial Fuzzy C-Means PET Image Segmentation of Neurodegenerative Disorder", A. Meena et.al / Indian Journal of Computer Science and Engineering (IJCSE).
- [3]. SumanTatirajua and Avi Mehta, "Image Segmentation using k-means clustering EM and Normalized Cuts". IEEE Trans. Parallel Diatribe. Syst., vol. 19, no. 5, pp. 710–720, May 2008.
- [4]. AjalaFunmilola A\*, Oke O.A, Adedeji T.O and Alade O.M, Adewusi E.A, "Fuzzy k-c-means Clustering Algorithm for Medical Image Segmentation", Journal of Information Engineering and Applications ISSN 2224-5782 (print) ISSN 2225-0506 (online) Vol 2, No.6, 2012.
- [5]. Beshiba Wilson and Julia Punitha Malar Dhas, "An Experimental Analysis of Fuzzy C-Means and K-Means Segmentation Algorithm for Iron Detection in Brain SWI using Matlab", International Journal of Computer Applications (0975 – 8887) Volume 104 – No 15, October 2014.
- [6]. M.H. FazelZarandia, M. Zarinbal and M. Izadi, "Systematic image processing for diagnosing brain tumors", Department of Industrial Engineering, Amirkabir University of Technology, P.O. Box 15875-4413, Tehran, Iran, journal homepage: [www.elsevier.com/locate/asoc](http://www.elsevier.com/locate/asoc)



- [7]. Samarjit Das, "Pattern Recognition using the Fuzzy c-means Technique". International Journal of Energy, Information and Communications Vol. 4, Issue 1, February 2013.
- [8]. Varnish Rajesh, BharathanVenkat, Vikesh Karan and M. Poonkodi, "Brain Tumor Segmentation and its Area Calculation in Brain MR Images Using K-Mean Clustering and Fuzzy C-Mean Algorithm", Department of Computer Science and Engineering, SRM University
- [9]. Krishna Kant Singh<sup>1</sup> and Akansha Singh, "A Study of Image Segmentation Algorithms for Different Types of Images", IJCSI International Journal of Computer Science Issues, Vol. 7, Issue 5, September 2010.
- [10]. Payalmistry, shagunakhauri, sayalipatil, s.p. tondare," Segmentation of brain tumor and its area calculation in brain MRI images using k-mean clustering and fuzzy c- mean algorithm.

**Cite this article as :**

Amar Madhekar, Pranoti Bawaskar, Pritam Devshatwar, Shubham Deshpande, Smita Chaudhari, "Automatic Brain Tissue Detection of Acute Ischemic Stroke Patients ", International Journal of Scientific Research in Computer Science, Engineering and Information Technology (IJSRCSEIT), ISSN : 2456-3307, Volume 9, Issue 2, pp.634-640, March-April-2023. Available at doi : <https://doi.org/10.32628/CSEIT2390284>  
Journal URL : <https://ijsrcseit.com/CSEIT2390284>